

THE Nutcracker

Peter Ilyich Tchaikovsky



BALLET
THEATER 17/18

FOR YOUR INFORMATION

Do you want more information about upcoming events at the Jacobs School of Music? There are several ways to learn more about our recitals, concerts, lectures, and more!

Events Online

Visit our online events calendar at **music.indiana.edu/events**: an up-to-date and comprehensive listing of Jacobs School of Music performances and other events.

Events to Your Inbox

Subscribe to our weekly *Upcoming Events* email and several other electronic communications through **music.indiana.edu/publicity**. Stay “in the know” about the hundreds of events the Jacobs School of Music offers each year, most of which are free!

In the News

Visit our website for news releases, links to recent reviews, and articles about the Jacobs School of Music: **music.indiana.edu/news**.

Musical Arts Center

The **Musical Arts Center (MAC) Box Office** is open Monday – Friday, 11:30 a.m. – 5:30 p.m. Call 812-855-7433 for information and ticket sales. Tickets are also available at the box office three hours before any ticketed performance. In addition, tickets can be ordered online at **music.indiana.edu/boxoffice**.

Entrance: The MAC lobby opens for all events one hour before the performance. The MAC auditorium opens one half hour before each performance.

Late Seating: Patrons arriving late will be seated at the discretion of the management.

Parking

Valid IU Permit Holders access to IU Garages

EM-P Permit: Free access to garages at all times.

Other permit holders: Free access if entering after 5 p.m. any day of the week.

Non-Permit Holders access to IU Garages

Free Friday 6 p.m. – Monday 7 a.m.

Monday – Thursday: Maximum of \$10 after 5 p.m. (less if parked up to 90 minutes).



JACOBS SCHOOL OF MUSIC

INDIANA UNIVERSITY

Bloomington

Three Hundred Thirty-Fourth Program of the 2017-18 Season

IU Jacobs School of Music Ballet Theater

presents its

59th annual production of

Peter Ilyich Tchaikovsky's

The Nutcracker

Ballet in Two Acts

Scenario by Michael Vernon,
after Marius Petipa's adaptation of the story
"The Nutcracker and the Mouse King"
by E. T. A. Hoffman

Michael Vernon, *Choreographer*

Carmon DeLeone, *Conductor*

C. David Higgins, *Set and Costume Designer*

Mitchell Ost, *Lighting Designer*

The Nutcracker was first performed at the Mariinsky Theatre
of St. Petersburg on December 18, 1892.

Musical Arts Center

Thursday Evening, November Thirtieth, Seven-Thirty O'Clock

Friday Evening, December First, Seven-Thirty O'Clock

Saturday Afternoon, December Second, Two O'Clock

Saturday Evening, December Second, Seven-Thirty O'Clock

Sunday Afternoon, December Third, Two O'Clock

music.indiana.edu

Thursday, November 30, 2017 | 7:30 p.m.

Act I

Prologue

Urchins . . . Emily Byrnes, Camille Dekydtspotter,
Caroline Jensen, Sawyer Smith
Passerby . . . Alexandra Jones
Maids . . . Victoria Manning and Alexandra Willson
Tradesperson . . . Natalie Hedrick

Party Scene

Clara . . . Sophie Noel
Fritz . . . Alaena Cimmer
Herr Drosselmeyer . . . Sasha Janes
Frau Silberhaus . . . Anna Peabody
Herr Silberhaus . . . Sam Epstein
Grandmother . . . Bryanna Mitchell
Grandfather . . . Robert Mack
Adult Guests . . . Grace Armstrong, Reece Conrad, Anderson Da Silva,
Kaylee Grippando, Kyra Mutttilainen, Andrew Playford,
Claudia Rhett, Andrew Rossi
Child Guests . . . Isabella Busch, Ella Dunham, Isha Gupta Harbaugh,
Koel Gupta Harbaugh, Marcella Miles, Aika Noguchi,
Kate Williamson, Shuran Yang
Columbine Dolls . . . Alia Federico and Ginabel Peterson-Padilla
Harlequin Doll . . . Nicholas Gray

FRONT PAGE FLO

BPP/IU Musical Collaboration

Book by Larry Kass, Sara Kass, &
George Pinney
Music & Lyrics by Larry Kass
Directed by George Pinney
Executive Producer Sara Kass
Music Director Terry LaBolt

DECEMBER 1 - 16

SHOWS START AT 7:30 PM
at the TED JONES PLAYHOUSE

NEWPLAYS.ORG
812-323-3020 | BCT BOX OFFICE



CARDINAL STAGE

FLY WITH US THIS HOLIDAY SEASON



PETER PAN

DECEMBER 15-30 at the **BUSKIRK-CHUMLEY THEATER**

FIND TICKETS TODAY!

cardinalstage.org | 812.336.9300

Dream Scene

Baby Mice . . . Harper Allgood, Claudia Allison,
Cynthia Byrnes, Berkeley Cooper, Kenji Kitano

The Battle

Nutcracker . . . Liam Doherty

Soldiers . . . Danika Allison, Emily Byrnes, Marlee Elkins,
Khulan Escue, Isabella Harris, Alice Hill, Amelia McAfee,
Evelyn McAlpin, Victoria Page, Anna Julia Kozak Rogo,
Avery Schwartzman, Eleanor Turner

Officers . . . David Baumann, Madeline Elkins, Tara Ganguly,
Grace May, Aika Noguchi, Chloe Shook

King Mouse . . . Matthew Serrano

Mice . . . Ariel Lyden and Sophia Ramlo
with Lily Bines, Alexis Eicher,
Natalie Hedrick, Alexandra Jones

Snow Scene

Snow Queen . . . Anna Grunewald

Snow Cavalier . . . Darren Hsu

Snow Princess . . . Sarah Young

Snow Flakes . . . Dancers of IU Jacobs School of Music Ballet Theater



**Enjoy
Bloomington's
favorite ice cream.
Now
served at the
Musical Arts Center!**

*The
Chocolate
Moose*

Since 1933





INDIANA UNIVERSITY JACOBS SCHOOL OF MUSIC

PRE-COLLEGE BALLET PROGRAM

*Educating children ages 3 to 18 in the
art of ballet for over 25 years.*



*Making dreams come true:
Give your child the gift of ballet.*

Accepting new students for the Spring 2018 semester!

Contact us at **812-855-6158**
or **balletpc@indiana.edu**.

For more information, visit
music.indiana.edu/precollege/year-round/ballet.

Intermission


Act II

Land of the Sweets

- Angels* . . . Harper Allgood, Claudia Allison, Cynthia Byrnes,
Emily Byrnes, Erica Byrnes, Berkeley Cooper,
Marlee Elkins, Cora Hall, Lina Mei Johansen,
London Lish, Lillian Ortiz, Victoria Page,
Marta Scalabrini, Asyat Schulz,
Avery Schwartzman, Sawyer Smith
- Sugar Plum Fairy* . . . Ryan McCreary
- Cavalier* . . . Mason Bassett
- Sugar Plum Attendants* . . . Grace Armstrong, Lily Bines,
Natalie Hedrick, Alyssa Lavroff,
Bryanna Mitchell, Rachel Schultz
with Madeline Elkins, Grace May,
Aika Noguchi, Sophia Ramlo

Divertissements

- Spanish* . . . Sophia Brodin
with Marissa Arnold, Jady Dahlberg,
Nicole Langway, Alexandra Willson
- Arabian* . . . Anna Lisa Wilkins and Jared Kelly
- Chinese* . . . Alexis Eicher, Nicholas Gray,
Anna Grunewald
- Trepak* . . . Sterling Manka
with Reece Conrad, Benjamin Streetman,
and Madeline Elkins, Grace May,
Aika Noguchi, Sophia Ramlo
- Mirlitons* . . . Lauren Smolka
with Julia Fleming, Rachel Gehr,
Claudia Rhett, Caroline Tonks
- Mother Ginger* . . . Robert Mack
- Her Children* . . . Audrey Adams, Alison Bowman, Jaidyn Janes,
Malia Pischel, Sydney Shoemaker,
Anastasia Sugimoto, Claire Watrous, Parker Witt
- Waltz of the Flowers* . . . Anna Peabody and Sam Epstein
with Claire Donovan, Alia Federico,
Lauren Lane, Ginabel Peterson-Padilla,
Gillian Worek, Sarah Young,
and dancers of IU Jacobs School of Music Ballet Theater
- Grand Pas De Deux* . . . Ryan McCreary and Mason Bassett
- Finale* . . . Entire Cast



Ariadne AUF *Naxos*

Richard Strauss

Feb. 2, 3, 9, 10 • 7:30PM
Musical Arts Center



JACOBS SCHOOL OF MUSIC
OPERA & BALLET
THEATER 17/18 SEASON

812-855-7433
music.indiana.edu/operaballet

Friday, December 1, 2017 | 7:30 p.m.

Act I

Prologue

Urchins . . . Emily Byrnes, Camille Dekydtspotter,
Caroline Jensen, Sawyer Smith
Passerby . . . Elizabeth Corsig
Maids . . . Claire Donovan and Alyssa Lavroff
Tradesperson . . . Natalie Hedrick

Party Scene

Clara . . . Aika Noguchi
Fritz . . . Elaina LaFollette
Herr Drosselmeyer . . . Sasha Janes
Frau Silberhaus . . . Sarah Young
Herr Silberhaus . . . Sam Epstein
Grandmother . . . Lily Bines
Grandfather . . . Benjamin Streetman
Adult Guests . . . Marissa Arnold, Haley Baker, Jady Dahlberg,
Rachel Gehr, Julian Goodwin-Ferris, Andrew Playford,
Andrew Rossi, Matthew Serrano
Child Guests . . . Jillian Barnes, Isabella Busch, Alaena Cimmer,
Mimi Donovan, Marcella Miles, Brianna Neary,
Sophie Noel, Anton Rose-Nichols
Columbine Dolls . . . Sophia Brodin and Alexandra Willson
Harlequin Doll . . . Liam Doherty



March 23, 24 • 7:30PM

March 24 • 2PM

Musical Arts Center

LUCIA — DI — LAMMERMOOR

Gaetano Donizetti



Feb. 23, 24, Mar. 2, 3 • 7:30PM
Musical Arts Center



JACOBS SCHOOL OF MUSIC
OPERA & BALLET
THEATER 17/18 SEASON

812-855-7433
music.indiana.edu/operaballet

Dream Scene

Baby Mice . . . Harper Allgood, Claudia Allison,
Cynthia Byrnes, Berkeley Cooper, Kenji Kitano

The Battle

Nutcracker . . . Sterling Manka

Soldiers . . . Emily Byrnes, Erica Byrnes, Marlee Elkins,
Khulan Escue, Isabella Harris, Alice Hill,
Kenji Kitano, Audrey Moore, Lillian Ortiz,
Victoria Page, Anna Julia Kozak Rogo, Suin Sung

Officers . . . Brooke Abrell, David Baumann, Ariel Lyden,
Grace May, Sophia Ramlo, Chloe Shook

King Mouse . . . Reece Conrad

Mice . . . Madeline Elkins and Tara Ganguly
with Alexis Eicher, Natalie Hedrick,
Alexandra Jones, Bryanna Mitchell

Snow Scene

Snow Queen . . . Claudia Rhett

Snow Cavalier . . . Antonio Houck

Snow Princess . . . Kristin Howard

Snow Flakes . . . Dancers of IU Jacobs School of Music Ballet Theater



Gregory Wang, IU Jacobs School
of Music doctoral student.

STAY IN THE SPOTLIGHT WITH MEADOWOOD

Meadowood is proud to be an IU Jacobs School of Music dress rehearsal site, helping musicians at IU stay in the spotlight. With engaging Lifestyle360 activities and quality care available when needed, our residents enjoy life at center stage.

**Call 812-336-7060 to join our
residents for a performance.**

MEADOWOOD

2455 Tamarack Trail
Bloomington, IN 47408

812-336-7060

www.MeadowoodRetirement.com

INDEPENDENT LIVING • OUTPATIENT REHAB
SKILLED NURSING • SHORT STAYS



©2017 Five Star Senior Living



Watch IU sports news on the go

with the Hoosier Sports Report app for iPhone and Android

The Hoosier Sports Report app is now available for free on iOS and Android devices—watch IU sports news anywhere!



Hoosier Sports Report features IU sports video news focusing on athletes and coaches, athletic facilities and fans. Our reporters also provide on-camera analysis, in studio and out in the field. HSR has covered more than 20 different IU sports. Additional programming includes post-game, pre-game, special topics, fan shows and more. **Watch at home, too, on your Roku, AppleTV, or AmazonFireTV.** Search “**Hoosier Sports Report**” on your supported streaming device or smartphone to get the app. Follow **@HooSportsRep** and **#HSRtv** on Twitter for new video news and updates.

Intermission

Act II

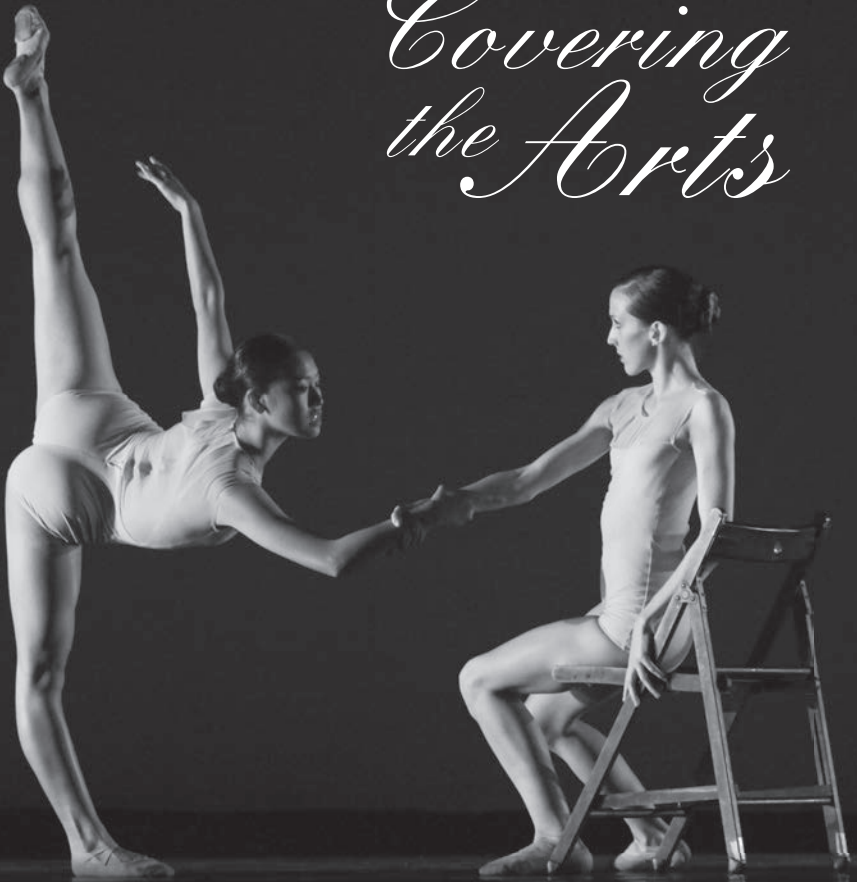
Land of the Sweets

- Angels* . . . Harper Allgood, Claudia Allison, Cynthia Byrnes,
Erica Byrnes, Naomi Clampitt, Berkeley Cooper,
Khulan Escue, Eloise Paynter Gjerdingen,
Cora Hall, Caroline Jensen, Lina Mei Johansen,
Audrey Moore, Victoria Page, Marta Scalabrini,
Asyat Schulz, Sawyer Smith
- Sugar Plum Fairy* . . . Anna Peabody
- Cavalier* . . . Mason Bassett
- Sugar Plum Attendants* . . . Alexis Eicher, Julia Fleming,
Kaylee Grippando, Alexandra Jones,
Alyssa Lavroff, Bryanna Mitchell
with Madeline Elkins, Tara Ganguly,
Ariel Lyden, Grace May

Divertissements

- Spanish* . . . Anna Lisa Wilkins
with Marissa Arnold, Kristin Howard,
Nicole Langway, Caroline Tonks
- Arabian* . . . Anna Barnes and Antonio Houck
- Chinese* . . . Anderson Da Silva, Rachel Schultz,
Cecilia Zanone
- Trepak* . . . Nicholas Gray
with Reece Conrad, Benjamin Streetman,
and Madeline Elkins, Tara Ganguly,
Ariel Lyden, Grace May
- Mirlitons* . . . Lauren Smolka
with Grace Armstrong, Haley Baker,
Sophia Brodin, Natalie Hedrick
- Mother Ginger* . . . Robert Mack
- Her Children* . . . Audrey Adams, Alison Bowman, Caroline Carney,
Jaidyn Janes, Holland Jones, Mira Koduri,
Sydney Shoemaker, Claire Watrous
- Waltz of the Flowers* . . . Camille Kellems and Andrew Rossi
with Claire Donovan, Alia Federico,
Lauren Lane, Kyra Mutttilainen,
Ginabel Peterson-Padilla, Sarah Young,
and dancers of IU Jacobs School of Music Ballet Theater
- Grand Pas De Deux* . . . Anna Peabody and Mason Bassett
- Finale* . . . Entire Cast

Covering the Arts



Stay up to date on Arts and Entertainment news from IU and the Bloomington community by reading the Indiana Daily Student. The IDS is available for free at more than 350 locations on campus and around town. You can also visit idsnews.com or download our mobile app.



IDS
INDIANA DAILY STUDENT

idsnews.com

Saturday, December 2, 2017 | 2:00 p.m.

Act I

Prologue

Urchins Emily Byrnes, Camille Dekydtspotter,
 Caroline Jensen, Sawyer Smith
Passerby Alexandra Jones
Maids Claire Donovan and Alyssa Lavroff
Tradesperson Natalie Hedrick

Party Scene

Clara Sophie Noel
Fritz Alaena Cimmer
Herr Drosselmeyer Antonio Houck
Frau Silberhaus Ryan McCreary
Herr Silberhaus Mason Bassett
Grandmother Bryanna Mitchell
Grandfather Benjamin Streetman
Adult Guests Grace Armstrong, Sam Epstein, Julian Goodwin-Ferris,
 Kaylee Grippando, Kyra Mutttilainen, Claudia Rhett,
 Andrew Rossi, Matthew Serrano
Child Guests Isabella Busch, Ella Dunham, Isha Gupta Harbaugh,
 Koel Gupta Harbaugh, Marcella Miles, Aika Noguchi,
 Kate Williamson, Shuran Yang
Columbine Dolls Jady Dahlberg and Cecilia Zanone
Harlequin Doll Reece Conrad

Dream Scene

Baby Mice Harper Allgood, Claudia Allison, Cynthia Byrnes,
 Berkeley Cooper, Kenji Kitano

The Battle

Nutcracker Sterling Manka
Soldiers Danika Allison, Emily Byrnes, Marlee Elkins,
 Khulan Escue, Isabella Harris, Alice Hill, Amelia McAfee,
 Evelyn McAlpin, Victoria Page, Anna Julia Kozak Rogo,
 Avery Schwartzman, Eleanor Turner
Officers David Baumann, Madeline Elkins, Tara Ganguly,
 Grace May, Aika Noguchi, Chloe Shook
King Mouse Robert Mack
Mice Ariel Lyden and Sophia Ramlo
 with Lily Bines, Alexis Eicher, Natalie Hedrick,
 Alexandra Jones

Snow Scene

Snow Queen Gillian Worek
Snow Cavalier Anderson Da Silva
Snow Princess Abigail Kulwicki
Snow Flakes Dancers of IU Jacobs School of Music Ballet Theater



INTERNET • TV • VOICE • SECURITY • CELLULAR

Proud supporter of _____

INDIANA UNIVERSITY
Opera & Ballet

— and the spectacular performance of —

*The Nutcracker
Ballet*



Smithville
THE GIGACITY COMPANY

smithville.com

Intermission

Act II

Land of the Sweets

- Angels* . . . Harper Allgood, Claudia Allison, Cynthia Byrnes,
Emily Byrnes, Erica Byrnes, Berkeley Cooper,
Marlee Elkins, Cora Hall, Lina Mei Johansen,
London Lish, Lillian Ortiz, Victoria Page,
Marta Scalabrini, Asyat Schulz,
Avery Schwartzman, Sawyer Smith
- Sugar Plum Fairy* . . . Rachel Schultz
- Cavalier* . . . Jared Kelly
- Sugar Plum Attendants* . . . Grace Armstrong, Marissa Arnold,
Lily Bines, Alexandra Jones,
Alyssa Lavroff, Bryanna Mitchell
with Madeline Elkins, Grace May,
Aika Noguchi, Sophia Ramlo

Divertissements

- Spanish* . . . Mackenzie Allen
with Anna Barnes, Claire Donovan,
Caroline Tonks, Sarah Young
- Arabian* . . . Alexis Eicher and Darren Hsu
- Chinese* . . . Haley Baker, Julian Goodwin-Ferris,
Abigail Kulwicki
- Trepak* . . . Liam Doherty
with Andrew Playford, Andrew Rossi,
and Madeline Elkins, Grace May,
Aika Noguchi, Sophia Ramlo
- Mirlitons* . . . Kyra Mutttilainen
with Sophia Brodin, Natalie Hedrick,
Camille Kellems, Claudia Rhett
- Mother Ginger* . . . Robert Mack
- Her Children* . . . Audrey Adams, Alison Bowman, Jaidyn Janes,
Malia Pischel, Sydney Shoemaker,
Anastasia Sugimoto, Claire Watrous, Parker Witt
- Waltz of the Flowers* . . . Anna Grunewald and Nicholas Gray
with Julia Fleming, Rachel Gehr,
Kaylee Grippando, Victoria Manning,
Alexandra Willson, Cecilia Zanone,
and dancers of IU Jacobs School of Music Ballet Theater
- Grand Pas De Deux* . . . Rachel Schultz and Jared Kelly
- Finale* . . . Entire Cast

Saturday, December 2, 2017 | 7:30 p.m.

Act I

Prologue

Urchins . . . Emily Byrnes, Camille Dekydtspotter,
Caroline Jensen, Sawyer Smith
Passerby . . . Elizabeth Corsig
Maids . . . Victoria Manning and Alexandra Willson
Tradesperson . . . Natalie Hedrick

Party Scene

Clara . . . Aika Noguchi
Fritz . . . Elaina LaFollette
Herr Drosselmeyer . . . Sasha Janes
Frau Silberhaus . . . Anna Peabody
Herr Silberhaus . . . Sam Epstein
Grandmother . . . Lily Bines
Grandfather . . . Benjamin Streetman
Adult Guests . . . Marissa Arnold, Haley Baker, Reece Conrad,
Jadyn Dahlberg, Rachel Gehr, Andrew Playford,
Andrew Rossi, Matthew Serrano
Child Guests . . . Jillian Barnes, Isabella Busch, Alaena Cimmer,
Mimi Donovan, Marcella Miles, Brianna Neary,
Sophie Noel, Anton Rose-Nichols
Columbine Dolls . . . Alia Federico and Ginabel Peterson-Padilla
Harlequin Doll . . . Nicholas Gray

Dream Scene

Baby Mice . . . Harper Allgood, Claudia Allison, Cynthia Byrnes,
Berkeley Cooper, Kenji Kitano

The Battle

Nutcracker . . . Anderson Da Silva
Soldiers . . . Emily Byrnes, Erica Byrnes, Marlee Elkins,
Khulan Escue, Isabella Harris, Alice Hill,
Kenji Kitano, Audrey Moore, Lillian Ortiz,
Victoria Page, Anna Julia Kozak Rogo, Suin Sung
Officers . . . Brooke Abrell, David Baumann, Ariel Lyden,
Grace May, Sophia Ramlo, Chloe Shook
King Mouse . . . Reece Conrad
Mice . . . Madeline Elkins and Tara Ganguly
with Alexis Eicher, Natalie Hedrick,
Alexandra Jones, Bryanna Mitchell

Snow Scene

Snow Queen . . . Kyra Mutttilainen
Snow Cavalier . . . Mason Bassett
Snow Princess . . . Lauren Smolka
Snow Flakes . . . Dancers of IU Jacobs School of Music Ballet Theater

Intermission

Act II

Land of the Sweets

- Angels* . . . Harper Allgood, Claudia Allison, Cynthia Byrnes,
Emily Byrnes, Erica Byrnes, Berkeley Cooper,
Marlee Elkins, Cora Hall, Lina Mei Johansen,
London Lish, Lillian Ortiz, Victoria Page,
Marta Scalabrini, Asyat Schulz,
Avery Schwartzman, Sawyer Smith
- Sugar Plum Fairy* . . . Georgia Dalton
- Cavalier* . . . Julian Goodwin-Ferris
- Sugar Plum Attendants* . . . Alexis Eicher, Kaylee Grippando,
Alexandra Jones, Alyssa Lavroff,
Bryanna Mitchell, Rachel Schultz
with Madeline Elkins, Tara Ganguly,
Ariel Lyden, Grace May

Divertissements

- Spanish* . . . Anna Lisa Wilkins
with Marissa Arnold, Kristin Howard,
Nicole Langway, Caroline Tonks
- Arabian* . . . Anna Barnes and Antonio Houck
- Chinese* . . . Anderson Da Silva, Abigail Kulwicki,
Cecilia Zanone
- Trepak* . . . Sterling Manka
with Reece Conrad, Benjamin Streetman,
and Madeline Elkins, Tara Ganguly,
Ariel Lyden, Grace May
- Mirlitons* . . . Camille Kellems
with Grace Armstrong, Haley Baker,
Sophia Brodin, Julia Fleming
- Mother Ginger* . . . Andrew Rossi
- Her Children* . . . Audrey Adams, Alison Bowman, Caroline Carney,
Camille Dekydtspotter, Jaidyn Janes,
Holland Jones, Mira Koduri, Claire Watrous
- Waltz of the Flowers* . . . Anna Grunewald and Nicholas Gray
with Claire Donovan, Alia Federico,
Lauren Lane, Kyra Muttilainen,
Ginabel Peterson-Padilla, Sarah Young,
and dancers of IU Jacobs School of Music Ballet Theater
- Grand Pas De Deux* . . . Georgia Dalton and Julian Goodwin-Ferris
- Finale* . . . Entire Cast

Sunday, December 3, 2017 | 2:00 p.m.

Act I

Prologue

Urchins . . . Emily Byrnes, Camille Dekydtspotter,
Caroline Jensen, Sawyer Smith
Passerby . . . Alexandra Jones
Maids . . . Victoria Manning and Alexandra Willson
Tradesperson . . . Natalie Hedrick

Party Scene

Clara . . . Aika Noguchi
Fritz . . . Elaina LaFollette
Herr Drosselmeyer . . . Sasha Janes
Frau Silberhaus . . . Sarah Young
Herr Silberhaus . . . Andrew Playford
Grandmother . . . Bryanna Mitchell
Grandfather . . . Robert Mack
Adult Guests . . . Grace Armstrong, Anderson Da Silva, Sam Epstein,
Rachel Gehr, Julian Goodwin-Ferris, Kyra Muttilainen,
Claudia Rhett, Andrew Rossi
Child Guests . . . Jillian Barnes, Isabella Busch, Alaena Cimmer,
Mimi Donovan, Marcella Miles, Brianna Neary,
Sophie Noel, Anton Rose-Nichols
Columbine Dolls . . . Jady Dahlberg and Cecilia Zanone
Harlequin Doll . . . Reece Conrad

Dream Scene

Baby Mice . . . Harper Allgood, Claudia Allison, Cynthia Byrnes,
Berkeley Cooper, Kenji Kitano

The Battle

Nutcracker . . . Liam Doherty
Soldiers . . . Emily Byrnes, Erica Byrnes, Marlee Elkins,
Khulan Escue, Isabella Harris, Alice Hill,
Kenji Kitano, Audrey Moore, Lillian Ortiz,
Victoria Page, Anna Julia Kozak Rogo, Suin Sung
Officers . . . Brooke Abrell, David Baumann, Ariel Lyden,
Grace May, Sophia Ramlo, Chloe Shook
King Mouse . . . Matthew Serrano
Mice . . . Madeline Elkins and Tara Ganguly
with Lily Bines, Alexis Eicher,
Natalie Hedrick, Alexandra Jones

Snow Scene

Snow Queen . . . Anna Grunewald
Snow Cavalier . . . Darren Hsu
Snow Princess . . . Mackenzie Allen
Snow Flakes . . . Dancers of IU Jacobs School of Music Ballet Theater

Intermission

Act II

Land of the Sweets

- Angels* . . . Harper Allgood, Claudia Allison, Cynthia Byrnes,
Emily Byrnes, Erica Byrnes, Berkeley Cooper,
Marlee Elkins, Cora Hall, Lina Mei Johansen,
London Lish, Lillian Ortiz, Victoria Page,
Marta Scalabrini, Asyat Schulz,
Avery Schwartzman, Sawyer Smith
- Sugar Plum Fairy* . . . Ryan McCreary
- Cavalier* . . . Mason Bassett
- Sugar Plum Attendants* . . . Grace Armstrong, Lily Bines,
Natalie Hedrick, Alyssa Lavroff,
Bryanna Mitchell, Rachel Schultz
with Madeline Elkins, Tara Ganguly,
Ariel Lyden, Grace May

Divertissements

- Spanish* . . . Sophia Brodin
with Marissa Arnold, Jady Dahlberg,
Nicole Langway, Alexandra Willson
- Arabian* . . . Anna Lisa Wilkins and Jared Kelly
- Chinese* . . . Alexis Eicher, Anna Grunewald,
Nicholas Gray
- Trepak* . . . Sterling Manka
with Anderson Da Silva, Andrew Rossi,
and Madeline Elkins, Tara Ganguly,
Ariel Lyden, Grace May
- Mirlitons* . . . Camille Kellems
with Julia Fleming, Rachel Gehr,
Claudia Rhett, Caroline Tonks
- Mother Ginger* . . . Robert Mack
- Her Children* . . . Audrey Adams, Alison Bowman, Caroline Carney,
Camille Dekydspotter, Jaidyn Janes,
Holland Jones, Mira Koduri, Claire Watrous
- Waltz of the Flowers* . . . Anna Peabody and Sam Epstein
with Claire Donovan, Alia Federico,
Lauren Lane, Kyra Muttillainen,
Ginabel Peterson-Padilla, Sarah Young,
and dancers of IU Jacobs School of Music Ballet Theater
- Grand Pas De Deux* . . . Ryan McCreary and Mason Bassett
- Finale* . . . Entire Cast

Snow Scene Corps de Ballet

Mackenzie Allen	Rachel Gehr	Ginabel Peterson-Padilla
Grace Armstrong	Kaylee Grippando	Claudia Rhett
Marissa Arnold	Anna Grunewald	Rachel Schultz
Haley Baker	Kristin Howard	Lauren Smolka
Anna Barnes	Camille Kellems	Caroline Tonks
Sophia Brodin	Abigail Kulwicki	Alexandra Willson
Jadyn Dahlberg	Lauren Lane	Anna Lisa Wilkins
Georgia Dalton	Victoria Manning	Gillian Worek
Claire Donovan	Ryan McCreary	Sarah Young
Alia Federico	Kyra Muttillainen	Cecilia Zanone
Julia Fleming	Anna Peabody	

Waltz of the Flowers Corps de Ballet

Mackenzie Allen	Alexis Eicher	Alyssa Lavroff
Grace Armstrong	Julia Fleming	Lilly Leech
Marissa Arnold	Kaylee Grippando	Victoria Manning
Lily Bines	Natalie Hedrick	Bryanna Mitchell
Gianna Biondo	Alexandra Jones	Rachel Schultz
Elizabeth Corsig	Nicole Langway	Gillian Worek
Jadyn Dahlberg		

The children performing in *The Nutcracker* are from the
Jacobs School of Music Pre-College Ballet Program.

Synopsis

Act I

The story is set in Vienna in the middle of the nineteenth century. Herr Silberhaus and his wife, along with their children, Clara and Fritz, celebrate the holiday festivities with friends and family. During this Christmas Eve night, the guests and their children rejoice in the magical Christmas atmosphere that Herr Drosselmeyer, Clara's godfather, brings to the Silberhaus home. He fills the festivities with magical entertainment, dancing dolls, and toys for the children. Herr Drosselmeyer has a special surprise for Clara, a Nutcracker doll. Overjoyed, Clara dances with her new Nutcracker, but her jealous brother, Fritz, breaks the Nutcracker. Herr Drosselmeyer fixes it with his magical powers, and after one final dance, all the guests leave.

That night, Clara falls into a deep sleep but is woken by giant mice that torment and threaten her. Herr Drosselmeyer protects her and helps her escape. She finds herself back in the living room where, to her amazement, the Christmas tree grows to a giant size, and she is in the midst of a huge battle between an army of tin soldiers and the mice. The Nutcracker doll comes to life and duels with the King Mouse. The Nutcracker ultimately rescues Clara from the King Mouse, whom she distracts by throwing her slipper, thus saving herself from his clutches. Herr Drosselmeyer takes Clara on the first part of a magical journey, the first stop of which is the Land of Snow, presided over by the Snow Queen and her Cavalier.

Act II

Herr Drosselmeyer then takes Clara to the Land of Sweets, where she is met by the Sugar Plum Fairy and her court of angels. Clara recounts her story of battle with the King Mouse. As a reward, the Sugar Plum Fairy performs her famous dance for Clara and invites her to stay and watch while she is entertained by the many Divertissements who inhabit her kingdom.

Artistic Staff



Michael Vernon, Choreographer, Chair Emeritus, Ballet Department

Faculty. Michael Vernon started dancing at the *Nesta* Brooking School of Ballet in London before going on to study at the Royal Ballet School in London with such legendary teachers as Dame Ninette de Valois and Leonide Massine. He performed with the Royal Ballet, Royal Opera Ballet, and London Festival Ballet before coming to New York in 1976 to join the

Eglevsky Ballet as ballet master and resident choreographer. He became artistic director of the Long Island-based company in 1989 and remained in that position until 1996.

Vernon choreographed numerous ballets for the Eglevsky Ballet, in addition to ballets for many other professional companies in the United States and worldwide, such as BalletMet of Columbus, Ohio, and North Carolina Dance Theatre. Mikhail Baryshnikov commissioned him to choreograph the successful pas de deux *In a Country Garden* for American Ballet Theatre (ABT). His solo *S'Wonderful* was danced by ABT principal Cynthia Harvey in the presence of President and Mrs. Reagan and shown nationwide on CBS television. He served as assistant choreographer on Ken Russell's movie *Valentino*, starring Rudolph Nureyev and Leslie Caron.

Vernon taught at Steps on Broadway in New York City for many years, working with dancers from New York City Ballet, American Ballet Theatre, and many other high-profile companies. He is an integral part of the Manhattan Dance Project, which brings New York-style master classes to all regions of the United States. He has been involved with the Ballet Program of the Chautauqua Institution since 1996 and is the artistic advisor for the Ballet School of Stamford. He is permanent guest teacher at the Manhattan Youth Ballet and has a long association with Ballet Hawaii.

Vernon has been a company teacher for American Ballet Theatre, Dance Theatre of Harlem, Metropolitan Opera Ballet, and Alvin Ailey American Dance Theater. He has guest taught in companies all over the world, including West Australian Ballet, National Ballet of China, Hong Kong Ballet, Birmingham Royal Ballet, Berlin Ballet, Royal Swedish Ballet, and the Norwegian National Ballet. He has been a guest teacher for The Juilliard School and taught for many years at The Ailey School. He has served on the panel of judges for the Youth of America Grand Prix regional semifinals. For Indiana University, Vernon has choreographed *Endless Night*, *Jeux*, *Spectre de la Rose*, and *Cathedral*, and has staged and provided additional choreography for the full-length classics *Swan Lake* and *The Sleeping Beauty*. He has choreographed for many IU Opera Theater productions, such as *Faust* and the world premiere of *Vincent*. His production of *The Nutcracker* has become one of the best attended events at the Jacobs School of Music.



Carmon DeLeone, Conductor. Carmon DeLeone is music director of

Cincinnati Ballet and conductor laureate of the Illinois Philharmonic Orchestra and the Middletown (Ohio) Symphony. At New York's Carnegie Hall, he has served as conductor and host of the Family Concert Series with the Orchestra of St. Luke's. He has conducted frequent performances in Europe with the Luxembourg Philharmonic Orchestra

and has been named the Illinois Music Director of the Year. Under DeLeone's leadership, the Illinois Philharmonic was twice named the Illinois Orchestra of the Year.

As a composer, he most recently premiered his *Fanfare, Funk and Fandango (An American Dance Set)*. He has composed many original scores for the ballet, most recently his *Princess & the Pea*. His best known work, a full-length ballet in two acts, *Peter Pan*, is enjoying continued praise in major cities from coast to coast as well as overseas. DeLeone conducted the debut of *Peter Pan* in London during a 28-performance run with the Atlanta Ballet at the prestigious Royal Festival Hall. His list of ballet score creations also includes *Frevo, Guernica, With Timbrel and Dance Praise His Name*, and Ruth Page's nationally televised production of *Billy Sunday*.

During his 12-year tenure as assistant, and later resident, conductor of the Cincinnati Symphony Orchestra, DeLeone served on its staff with music directors Max Rudolf, Thomas Schippers, Walter Susskind, and Erich Kunzel. He was also selected personally by Erich Leinsdorf to participate in an intensive master conducting seminar at Lincoln Center.

DeLeone's diverse talents are demonstrated by the wide range of his musical interests. He is experienced in both the classics and jazz, whether leading his own Studio Big Band from the drum set or playing French horn in both idioms.

As adjunct assistant professor of opera and music theatre at the Cincinnati College-Conservatory of Music, he conducted productions of *Prince Igor, La Cenerentola, Gianni Schicchi, The Crucible, La Calisto* (American premiere), and *The Secret Marriage*. At Indiana University, he conducted the world premiere and nationally televised production of John Eaton's children's opera, *The Lion and Androcles*.

DeLeone is very pleased to have made his New York conducting debut with the Alvin Ailey American Dance Theater for its season-opening gala performance of *Carmina Burana and Revelations* at New York's City Center. He made his Carnegie Hall debut with the Orchestra of St. Luke's and was immediately re-engaged to host and conduct all of the following year's series of Family Concerts.

He is a proud recipient of Cincinnati's prestigious Post-Corbett Award for excellence in the arts. He was named A Gentleman of Style and Substance by *Cincinnati Magazine*, and, most recently, was awarded the esteemed MacDowell Medal by the Cincinnati MacDowell Society.



C. David Higgins, Set and Costume Designer. Born in Bloomington, Indiana, and raised not two blocks from the Indiana University campus, C. David Higgins started his theatrical studies at IU intent on becoming an actor/dancer before he discovered his love for scenic design. He studied with the famous C. Mario Cristini and became proficient in the Romantic-Realist style of scenic design and painting. After earning his master's degree, he joined the staff of IU Opera Theater and worked there as master scenic artist from the time the Musical Arts Center opened in 1971 until his retirement in December 2011. He was appointed to the faculty in 1976 and served as chair of the Opera Studies Department and principal designer for Opera Theater. His design credits throughout the United States include the San Antonio Festival, Memphis Opera, Norfolk Opera, Louisville Opera, Detroit Symphony, Canton Ballet, and Sarasota Ballet as well as many other venues. His Indiana University productions have been seen throughout North America as rentals by major regional opera companies. His many international credits include the Icelandic National Theater; Ballet San Juan de Puerto Rico; Korean National Opera; Seoul City Opera; Korean National Ballet; Dorset Opera (England); Teatro la Paz de Belém, Brazil; and the Teatro Nacional de São Paulo, Brazil. He has

designed the scenery for the world première of *Our Town* (Ned Rorem), the American premières of *Jeppé* (Sandström) and *The Devils of Loudun* (Penderecki), and the collegiate premieres of *Nixon in China* (Adams) and *The Ghosts of Versailles* (Corigliano) as well as many other operas and ballets. Known for his Italianate painting style, *Opera News* magazine has referred to Higgins as one of the finest American scenic artists today.



Mitchell Ost, Lighting Designer. Originally from Chicago, Mitchell Ost is the lighting supervisor for the Jacobs School of Music. He recently relocated to Bloomington after living in New York City, where he was a resident designer at Joe's Pub, the cabaret space at the Public Theater. In addition to his work in the New York opera, theater, and dance world, he has designed lighting and scenery on several continents. Ost is currently a resident designer for the M Ensemble Company in Miami, Florida. He also worked for several years in the lighting department at Trinity Repertory Company in Providence, Rhode Island.

Featured Dancers



Mackenzie Allen is a senior in the Jacobs School of Music working toward a Bachelor of Science in Ballet Performance and is also in the Kelley School of Business, where she is studying accounting. Originally from Rockville, Maryland, she attended The Washington School of Ballet under the direction of Kee Juan Han. At Indiana University, she has performed in George Balanchine's *Swan Lake* and *Divertimento No. 15*, Jerome Robbins' *NY Export: Opus Jazz*, Sasha Janes' *Sketches from Grace*, and Michael Vernon's *The Nutcracker*. In IU Opera Theater's production of *Oklahoma!*, she appeared as Dream Laurie in the ballet dream scene. In the summer of 2017, she danced with the Washington, D.C.-based contemporary company Errant Movement, with which she toured to perform in Chicago and Detroit.



Anna Barnes was born in Los Angeles, California, and started her ballet training at age three at the Westside Ballet School in Santa Monica, run by the late Yvonne Mounsey. In 2015, Barnes graduated from Colburn Dance Academy, run by Jenifer Ringer and Benjamin Millepied. Barnes is pursuing a Bachelor of Science in Ballet Performance at the Jacobs School with an Outside Field in Marketing at the Kelley School of Business. Her favorite ballets performed while attending Jacobs are Twyla Tharp's *Surfer at the River Styx*, George Balanchine's *Serenade*, and, most recently, Jerome Robbins' *N.Y. Export: Opus Jazz*.



Mason Bassett is a freshman at Indiana University from Bryan, Ohio. He started dancing at Bryan Community School of Dance, under the direction of Kimberly Shaffer, taking ballet, jazz, tap, and modern. He later trained with Nigel Burgoine at the Ballet Theatre of Toledo. For his senior year of high school, he attended Interlochen Arts Academy, studying with Joseph Morrissey. He has attended summer intensives at Interlochen Arts Camp (2014), Pennsylvania Ballet (2015), and The Nutmeg Ballet Conservatory (2016). At the Jacobs School, Bassett is pursuing a Bachelor of Science in

Ballet Performance with an Outside Field in Arts Management. In IU Ballet Theater's Fall Ballet, he performed in two pieces choreographed by Sasha Janes (*You and I* and *Lascia la Spina, Cogli la Rosa*) and in Jerome Robbins' *N.Y. Export: Opus Jazz*.



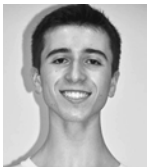
Georgia Dalton was born and raised in Columbus, Ohio, and began her ballet training with Columbus Youth Ballet at age three. From age five to eighteen, her ballet education included formal training with Dublin Dance Centre and Columbus City Ballet. She has attended summer intensive programs at American Ballet Theatre, Boston Ballet, Miami City Ballet, and Ballet Met. Dalton most recently performed *Flower Festival in Genzano* and *Lascia la Spina, Cogli la Rosa* with IU Jacobs School of Music Ballet Theater. She is a recipient of the Premier Young Artist Award and is a junior pursuing a Bachelor of Science in Ballet Performance with an Outside Field in Marketing.



A freshman at the Jacobs School of Music, **Anderson Da Silva** is pursuing a Bachelor of Science in Ballet Performance with an Outside Field in Exercise Science. He was born in Tampa, Florida, and received ballet training in Tampa at America's Ballet School under directors Paula Nuñez and Osmany Montano. He has performed leading roles in *The Nutcracker*, *Le Corsaire*, *Don Quixote*, *Coppelia*, and *Diana & Acteon*.



Alexis Eicher was born in Fort Wayne, Indiana. She began dancing at age four in a church dance ministry but did not begin pre-professional ballet training until the sixth grade, at the New American Youth Ballet under the instruction of Beth McLeish. Eicher has taken master classes with teachers from New York City Ballet, Boston Ballet, and Pacific Northwest Ballet. She spent seven weeks at the Chautauqua Summer Intensive, where she worked closely with Patricia McBride and performed in George Balanchine's *Rubies* with the Charlotte Ballet. Eicher has also performed repertoire choreographed by Michael Vernon, Mark Diamond, Eddy Ocampo, Jimmy Orrante, Melinda Howe, and many others. During her time at IU, she has performed in Jerome Robbins' *N.Y. Export: Opus Jazz* and Sasha Janes' *Sketches from Grace*. She is currently a freshman pursuing a Bachelor of Science in Ballet with an Outside Field in Psychology.



Sam Epstein is from Saratoga Springs, New York, where he trained at the National Museum of Dance. He began his formal training at the New York State Summer School of the Arts School of Ballet under the direction of Daniel Ulbricht. He has received scholarships to summer programs at Ballet Academy East, Boston Ballet School, and American Ballet Theatre. Epstein is currently a freshman pursuing a Bachelor of Science in Ballet Performance. He is a recipient of the Premier Young Artist Award, a member of the Hutton Honors College, and a Wells Scholar. During his time at IU, he has performed the male principal role in George Balanchine's *Valse-Fantaisie*.



Julian Goodwin-Ferris was raised in Houston, Texas. He is pursuing a Bachelor of Science in Ballet Performance, with an Outside Field in Music. Last year, he took a leave of absence from IU to dance with Ballet Austin for a season. While there, he traveled to China on tour for a month and performed solo roles in Stephen Mills' *The Nutcracker* and Setptime Webre's *Alice (in Wonderland)*, among other ballets. He started

his training at the Houston Ballet Academy, where he danced for more than 10 years. In Houston, he performed numerous roles at the academy, including an adagio variation from *The Sleeping Beauty*, a solo from the *Swan Lake* hunt scene, and parts in Stanton Welch's *Brigade* and Bournonville's *Napoli* as well as multiple small roles with the company. In 2015, Goodwin-Ferris studied at the Palucca Hochschule für Tanz in Dresden, Germany, for a month. He has attended summer programs at the Royal Danish Ballet, American Ballet Theatre, Houston Ballet, and, most recently Jacob's Pillow Dance. Between 2007 and 2009, he sang in the Children's Chorus for Houston Grand Opera's productions, and he sang a solo in *The Village of Waltz* for Hope Stone Dance Company in 2009 and 2010. He has performed roles in several Shakespeare plays, including Anthony in *Julius Caesar*, Oberon in *A Midsummer's Night Dream*, and Feste in *Twelfth Night*. He will perform the Cavalier in *The Nutcracker* with the San Luis Obispo Civic Ballet this December.



Nicholas Gray is a junior pursuing a Bachelor of Science in Ballet Performance with an Outside Field in Theatre and Drama. He grew up in Milwaukee, Wisconsin, where he trained at the First Stage Theatre Academy for six years and the Milwaukee Ballet for three years. He then began training at The Nutmeg Ballet Conservatory for his junior and senior years of high school. Gray has spent summers at the Pacific

Northwest Ballet and at the Chautauqua Institution, where he performed George Balanchine's *Raymonda* and Sasha Janes' *Playground Teasers*, as well as the *Coppélia Mazurka* dance with Pittsburgh Ballet Theatre. Gray's IU Ballet Theatre appearances include August Bournonville's *Flower Festival in Genzano*, Jerome Robbins' *N.Y. Export; Opus Jazz and Fanfare*, Twyla Tharp's *As Time Goes By* and *Surfer at the River Styx*, Michael Vernon's *The Nutcracker*, and Paul Taylor's *Musical Offering*. He has performed with IU Opera Theater in its productions of Rodgers and Hammerstein's *Oklahoma!* and Handel's *Rodelinda*. Last spring, Gray performed in the ensemble of IU Theatre's production of *The Drowsy Chaperone*.



Anna Grunewald was born in Pittsburgh, Pennsylvania. She began her training at a small performing arts school and moved on to the Ballet Academy of Pittsburgh from the fourth grade through her senior year of high school. There she danced under the instruction of Steven and Lindsay Piper and Lindy Mandradjieff. In previous summers, Grunewald has studied at the Saratoga Summer Dance Intensive, Boston Ballet,

Texas Ballet Theater, Ballet West, and Chautauqua. She is currently a junior at the Jacobs School pursuing a Bachelor of Science in Ballet Performance with an Outside Field in Arts Management. During her time at Indiana University, she has performed in George Balanchine's *Concerto Barocco*, *Serenade*, and *Divertimento No.15*, as well as in *Giselle*, Bournonville's *Flower Festival in Genzano*, and Sasha Janes' *Lascia la Spina, Cogli la Rosa*.



Antonio Houck was born and raised in Boulder, Colorado, and began dancing at the age of nine at Colorado Conservatory of Dance. He has attended intensive programs at Pittsburgh Ballet Theatre, Orlando Ballet, and Hubbard Street Dance. This is his third year at the Jacobs School, where he is pursuing a Bachelor of Science in Ballet Performance with an Outside Field in Public and Environmental Policy. He has appeared in *N.Y. Export: Opus Jazz, Musical Offering, Giselle, Saudade*, and Sasha Janes' *Sketches from Grace*.



Kristin Howard is a senior pursuing a Bachelor of Science in Ballet Performance with an Outside Field in Business and a Minor in Business Marketing. Growing up in California, she began her ballet studies at age eight under the instruction of Stuart Carroll and Sharon Newton at Capitol Ballet Center in Sacramento. There she performed lead roles in *The Nutcracker, La Bayadere, Giselle, Swan Lake, Les Patineurs, A Midsummer Night's Dream*, and *Coppelia*. She has attended summer intensive programs at The School of American Ballet in New York and Pacific Northwest Ballet in Seattle on scholarship, as well as interning at Joffrey Ballet School in San Francisco in 2016. At Indiana University, she has performed in George Balanchine's *Swan Lake, Concerto Barocco, Elegie*, and *Divertimento No. 15*, as well as in Michael Vernon's *The Nutcracker*, featured as the Snow Queen. Howard is a recipient of the Jacobs School of Music Premier Young Artist Scholarship, the Academic Excellence Scholarship, and the Founders Scholar Award. After her graduation this December, she will be pursuing a professional career in business with a focus on the arts.



Darren Hsu was born and raised in Rockville, Maryland, and began his training with the Maryland Youth Ballet when he was seven years old. There he studied with Michelle Lees, Christopher Doyle, Rhodie Jorgenson, and other former professional dancers. With their encouragement, Hsu briefly trained with Pacific Northwest Ballet, American Ballet Theatre, Orlando Ballet School, and the master class series held at the Kennedy Center in Washington, D.C. He is currently a junior at the Jacobs School of Music pursuing a Bachelor of Science in Ballet Performance with an Outside Field in Informatics.



Camille Kellems is a junior pursuing a Bachelor of Science in Ballet Performance with an Outside Field in Arts Management. She was born and raised in Newport Beach, California, and began dancing at age three at Classical Dance Center. Her pre-professional ballet training began at Ballet Pacific, which transitioned to the Maple Conservatory under the direction of Charles Maple. She has attended summer intensives with San Francisco Ballet, Pacific Northwest Ballet, The School of American Ballet, and Boston Ballet. At IU, she has performed in *Giselle*, George Balanchine's *Serenade, Divertimento No. 15*, and *Valse-Fantasia*; Jerome Robbins' *Fanfare*; Twyla Tharp's *As Time Goes By*; and Michael Vernon's *The Nutcracker*.



Jared Alexander Kelly is a junior from Suitland, Maryland. He is pursuing a Bachelor of Science in Ballet Performance with an Outside Field in Marketing. While in elementary school, he participated in the Dance Theatre of Harlem's Pre-Professional Residency Program at the Kennedy Center in Washington, D.C., under the leadership of world-renowned dancer and founder Arthur Mitchell. Kelly began more intensive training at The Washington School of Ballet (TWSB) with Kee Juan Han and Katrina Toews. With TWSB, he performed at the White House for President Obama and the First Lady. After middle school, Kelly trained under the direction of Norma Pera and the dance faculty at the Baltimore School for the Arts (BSA). He performed numerous lead roles on the Lyric Opera House stage while at BSA, including *The Preacher in Appalachian Spring* by Martha Graham and *The Nutcracker Prince* in Barry Hughson's *The Nutcracker*. While attending the Baltimore School for the Arts, he became a founding member of Vision Contemporary Dance Ensemble, performing modern, African, and contemporary pieces under the artistic direction of D.C. dance legend Katherine Smith. At Indiana University, he has danced in Balanchine's *Divertimento No. 15* and *Serenade*. He has also performed principal roles in Twyla Tharp's *Surfer at the River Styx* and *As Time Goes By*. Most recently, he performed the *Flower Festival Pas de Deux* by August Bournonville, *Hallelujah* from *Sketches from Grace* by Sasha Janes, and *N.Y. Export: Opus Jazz* by Jerome Robbins.



Abigail Kulwicki grew up in Hudson, Ohio, and began her ballet training under the instruction of Mia Klinger in Cuyahoga Falls, Ohio. As a member of the Cuyahoga Valley Youth Ballet, she performed lead and featured roles in original ballets choreographed by Francis Patrelle, Tom Gold, Laszlo Berdo, and other well-known choreographers. At 15, she moved to Winston-Salem, North Carolina, to continue her training and complete her high school studies at the University of North Carolina School of the Arts. There Kulwicki was featured in *Polovtsian Dances*, an original piece choreographed by Dean Susan Jaffe, as well as in numerous Balanchine ballets, such as *La Source* and *Sleeping Beauty*. She has attended summer intensives at Boston Ballet, Carolina Ballet, Central Pennsylvania Youth Ballet, Gelsey Kirkland Academy, and Washington Ballet. During her time at Indiana University, she has performed in *Emeralds*, *The Nutcracker*, *Giselle*, and *Swan Lake*. She is a senior pursuing a Bachelor of Science in Ballet Performance with an Outside Field in Elementary Education.



Sterling Manka is a junior from Fishers, Indiana, pursuing a Bachelor of Science in Ballet Performance. He began dancing age eight at the Jordan Academy of Dance at Butler University and graduated from Indiana Ballet Conservatory, where he trained with Sergey Sergiev. Manka also trained privately under Marek Cholewa and Rosanna Ruffo, professors of dance at Butler. He placed in the top 12 in the Ensembles category at the Youth America Grand Prix finals in New York City for his performance in Sergey Sergiev's *Amélie*. Additionally, he attended the 2015 Bolshoi Ballet Academy Summer Intensive in New York City, where he won a scholarship to spend a month training at the Bolshoi Ballet Academy in Moscow, Russia, and an invitation to train at the academy year round. Recently, he choreographed the contemporary solo *Wake* for his

twin sister (and apprentice with American National Ballet), Hanna Manka, for the 2016 Varna International Ballet Competition in Varna, Bulgaria. While at IU, he has performed in George Balanchine's *Divertimento No. 15* and *The Steadfast Tin Soldier*, Twyla Tharp's *As Time Goes By*, Michael Vernon's *The Nutcracker*, Jerome Robbins' *Fanfare*, and IU Opera and Ballet Theater's collaborative production of *Oklahoma!* Manka is a member of the Hutton Honors College.



Ryan McCreary is a senior from Cincinnati, Ohio, pursuing a Bachelor of Science in Ballet Performance with an Outside Field in Psychology. She first fell in love with ballet during her years at Northern Cincinnati Youth Ballet under the direction of Oliver Arana, Susie Payne, Stephanie Roig, and Tricia Sundbeck. During this time, McCreary performed roles in *Don Quixote*, *Paquita*, *The Nutcracker*, and more. She placed fourth in the World Ballet Competition in 2012 and in the top 12 at Youth America Grand Prix, New York. She received the silver award at YoungArts in Miami, Florida, where she was also invited to participate in the Presidential Scholar program. She has attended summer intensives such as The School of American Ballet and Chautauqua. While at Chautauqua, she performed with Charlotte Ballet and Pittsburgh Ballet Theatre, and in a special performance alongside some of Chautauqua's finest alumni. Since coming to the Jacobs School of Music, McCreary has performed lead roles in works choreographed by Paul Taylor, George Balanchine, Michael Vernon, and Sasha Janes.



Claudia Rhett grew up in Nashville, Tennessee, and trained with Harding Academy School of Dance beginning at age three. During her time there, she studied several styles of dance and served as an assistant teacher for younger classes. She has attended summer intensives at The School of American Ballet, Pacific Northwest Ballet, and, most recently, Chautauqua. Currently a sophomore at the Jacobs School, Rhett is pursuing a Bachelor of Science in Ballet Performance with an Outside Field in Business and teaches in the Pre-College Ballet Program. While at IU, she has performed in Michael Vernon's *The Nutcracker*, *Giselle* as staged by Eve Lawson, Jerome Robbins' *Fanfare*, George Balanchine's *Valse-Fantaisie*, and Sasha Janes' *Sketches from Grace*.



Kyra Mutttilainen is a sophomore from Richmond, Vermont, pursuing a Bachelor of Science in Ballet Performance. She began her training at the age of five at Vermont Ballet Theater under the direction of Alex and Kirsten Nagiba. She has attended summer intensives with the Bolshoi Ballet, Houston Ballet, Ellison Ballet, and Pittsburgh Ballet Theater. In her time with IU Jacobs School of Music Ballet Theater, she has performed in Jerome Robbins' *Fanfare*, George Balanchine's *Valse-Fantaisie*, *Giselle*, and Michael Vernon's *The Nutcracker*. Mutttilainen is a recipient of the Premier Young Artist Award.



Prior to attending the Jacobs School of Music, **Anna Peabody** spent four years as a student at the Baltimore School for the Arts in Baltimore, Maryland, under the instruction of Norma Pera and Anton Wilson. During her time there, Peabody performed lead roles in Martha Graham's *Appalachian Spring*, George Balanchine's *Serenade*, and Barry Hughson's *The Nutcracker*, as well as in multiple other works choreographed by Christopher d'Amboise. Peabody has attended summer intensives with Boston Ballet School and Ballet Austin. Most recently, she spent her summer at the Chautauqua Institution studying under Patricia McBride and Jean-Pierre Bonnefoux, where she performed with the Charlotte Ballet and Pittsburgh Ballet Theatre. Currently in her third year at IU, she has performed in Paul Taylor's *Musical Offering*, Michael Vernon's *The Nutcracker*, Sasha Janes' *Saudade* and *Sketches from Grace*, and Jerome Robbins' *Fanfare*. She is pursuing a Bachelor of Science in Ballet Performance with an Outside Field in Elementary Education.



Andrew Rossi was born and raised in Pittsburgh, Pennsylvania. He began his formal dance training at age 14 with the Ballet Academy of Pittsburgh under the direction of Steven and Lindsay Piper and with the Dance Conservatory of Pittsburgh under the direction of Danielle Pavlik and Mariah McLeod. His summers were spent dancing at the Point Park University Summer Dance Intensive, the Chautauqua Institution, and Pacific Northwest Ballet. Rossi is a freshman on scholarship at the Jacobs School of Music pursuing a Bachelor of Science in Ballet Performance. While at IU, he has choreographed for the outreach initiative Occupy People's Park. Last fall, Rossi performed in IU Opera Theater's production of *Don Giovanni* and George Balanchine's *Valse-Fantasie* with IU Ballet Theater.



Rachel Schultz is a sophomore at the Jacobs School of Music pursuing a Bachelor of Science in Ballet Performance with an Outside Field in Arts Management. She began her ballet training at age eight in Crystal Lake, Illinois, at the Judith Svalander School of Ballet. She has studied at many different ballet schools, including Omaha Theater Ballet School under the direction of Robin Welch, Ruth Page Center for the Arts under the direction of Doloris Lipinski and Victor Alexander, and Southold Dance Theater under Erica Fischbach. In 2016, she graduated from the Indiana Ballet Conservatory under the direction of Alyona Yakovleva-Randall. She also studied privately with Allen Fields, Ellen Huston, and Tatiana Pali. Also in 2016, Schultz won second place in the senior classical division at Youth America Grand Prix in Indianapolis. This past spring, she competed in the National Society of Arts and Letters dance competition for the Bloomington chapter and was awarded a grant. During her freshman year, she danced in Michael Vernon's *The Nutcracker*, Jerome Robbins' *Fanfare*, and *Giselle*.



Lauren Smolka is a junior from Greensburg, Pennsylvania. She began dancing at the age of three and developed her passion for ballet at the age of thirteen, when she was admitted into the pre-professional division at Pittsburgh Ballet Theatre (PBT). She performed in Pittsburgh Ballet Theatre's production of *The Nutcracker* as a Snowflake and a Flower alongside company members. In the PBT school performances, she performed in David Lichine's *Graduation Ball* and Marius Petipa's *La Bayadere*. Smolka has also performed in works choreographed by George Balanchine, including *Snowflakes*, *Raymonda Variations*, *Concerto Barocco*, *Elegies*, *Divertimento No. 15*, and *Valse-Fantaisie*. One of her most memorable performances was dancing the role of the Oboe in Jerome Robbins' *Fanfare* with IU Jacobs School of Music Ballet Theater. She has attended summer intensive programs at Pittsburgh Ballet Theatre, Boston Ballet, and American Ballet Theatre, New York.



Anna Lisa Wilkins was born and raised in East Longmeadow, Massachusetts. She is pursuing a Bachelor of Science in Ballet Performance with an Outside Field in Italian as well as a Bachelor of Science in Finance. She hopes to dance with a professional ballet company after graduation. At the Jacobs School of Music, she has been involved with many of the opera and ballet performances, either as a dancer in the ballets or working for the costume department for the operas. Her repertoire at IU includes *Concerto Barocco*, *The Nutcracker*, *Divertimento No. 15*, *Fanfare*, *Flower Festival in Genzano*, and *NY Export: Opus Jazz*. She has been involved with the Pre-College Ballet Program, both in teaching and choreographic roles. This year, Wilkins also became involved with community outreach through the ballet department.



Gillian Worek is a senior pursuing a Bachelor of Science in Ballet Performance with an Outside Field in Psychology. She grew up in Florence, New Jersey, where she studied ballet under the direction of Julie Caprio at the Hamilton Ballet Theatre. Worek has performed with IU Jacobs School of Music Ballet Theater in Jerome Robbins' *Fanfare* and George Balanchine's *Valse-Fantaisie*, *Divertimento No.15*, and *Swan Lake* (Act III), as well as *Giselle* (Act II) and Michael Vernon's *The Nutcracker*. This past summer, she attended the Boca Ballet Theater Advanced Summer Intensive, where she performed Balanchine's *La Source*.



Sarah Young was born in Bloomington, Indiana, where she began her ballet training in the Pre-College Ballet Program at the Jacobs School of Music. By the time she was in high school, she had attended summer intensives at The School of American Ballet, Pacific Northwest Ballet, and Houston Ballet. She continued her training under Peter Boal at the Professional Division Program at Pacific Northwest Ballet, where she danced alongside the professional company in numerous roles, including in George Balanchine's *Diamonds*, Alexi Ratmansky's *Don Quixote*, and Kent Stowell's *The Nutcracker*. A junior at Indiana University, Young is double-major pursuing a Bachelor of Science in Ballet Performance at Jacobs and a Bachelor of Science in Marketing at the Kelley School of Business. She remains an active participant in Kelley, Jacobs, and the Hutton Honors College.

Women's Chorus

Tiffany Choe
Eujean Ashley Chung
Roisin Clark
Vanessa Gehring
Anna Ginther

Cadie Jordan
Rachel Mikol
Virginia Mims
Kathryn Rock

Lisa Shin
Eva Shuman
Frances Van Vuuren
Leeza Yorke

University Orchestra

Violin I

Elina Rubio
Kelsea Au
Jisun Lee
Mone Takeda
Justin Li
Simona Staneva
Isaiah Butler
Liam Ramsey-White
Joshelle Conley
Yoonhee Kim
Esther Pak
Qianyi Fan
Nathan Greenwood

Violin II

Rebecca Edge
Phoebe White
Gersh Chernviskiy
Anya Brumfield
Peiyuan Chen
Hannah Cleveland
Omer Salomon
Yuanze Li
Mariah Murphy
Maris Pilgrim

Viola

Libby Doubrawa
Christopher Alley
Samantha Lee
Mary Chang
Larissa Mapua
Álex Jimbo Viteri
Alexis Raygor
Federico Sánchez

Cello

Chris Cho
John Yang
Joanne Choi

Cello (cont.)

Krystian Chiu
Luke Acerra
Shuzo Hamada
Xiyan Liu
Maddison MacDonald

Bass

Per Björkling
Jacob Jezioro
Bailey Bennett
Cameron Ingram

Flute

Megan Pan
Stephanie Hegedus
Savannah Gentry, *Piccolo*

Oboe

Lisa Lutgen
Jenna Bingham
Nathalie Vela, *English Horn*

Clarinet

Luke Folse
Jonathan Webber
Cameron Winrow, *Bass*

Bassoon

Benjamin Bradshaw
Jake Taniguchi

Horn

Nathanael Udell
Barbara Bright-Read
Tessa Pettit
Christopher Poe

Trumpet

Keanu Cover
Lizbeth Yanez

Trombone

Stewart Rhodes
Nathanial Esten
Kolbe James, *Bass*

Tuba

Miguel Menéndez-Pidal

Timpani

Daniel Sahyouni

Percussion

McKayla Phillips
John Tadlock
Laura Wilson

Harp

Melanie Mashner
Aubrey Shumway

Celesta

Yohan Kwon

Orchestra Manager

Austin Pancner
Christy Oscar, *Asst.*

Orchestra Set-Up

Christy Oscar
Monica Yang
Nathanael Udell
Lawson Long
Larissa Mapua
Chialing Pidd
Álex Jimbo-Viteri

Librarian

Sara Fruehe
Cynthia Stacy

Student Production Staff

Chorus Master	Han Na Jang
Stage Supervisor	Ben Huntley
Stage Crew	Sharon Beamer, Duncan Bowie Sam Bowser, Hannah Davis, Bryce Greene Cassie Hakken, Harper Humphrey, Michael McBride Sean Murphy, Faith Mysak, Shania Phillips Kyle Resener, Hunter Rivera, Summer Schuller Kat Tafoya, Gwen Van Denburg, Crystal Vanrell
Electrics Assistants	Blake Christ, Betsy Wray
Electrics Crew	Sara Dailey, Abigail Fickinger Will Lusk, Jessica Mawhorr, Evan Pruitt Erin Rieger, Sarah Schaefer, Matt Urbanek
Props Master	Olivia Dagley
Props Assistant	Rachael Banach
Paint Supervisor	Amber McKoy
Paint Crew	Steven Garza, Melissa Krueger Kayla Listenberger, Mike Schuler Macey White, Sasha Wiesenhahn
Wig Assistant	Eileen Jennings
Costume Crew	Toni Andres, Justin Barbour, Cecily Bednarek Brad Bickhardt, Madeline Coffey, Liz Culpepper Kayla Eldridge, Kelly Hamm, Geuna Kim Anna Kozłakiewicz, Yingge Liu, Jenna Sears Catie Sneath, Eleni Taluzek Savannah Webber, Amy Wooster
Audio Production Crew	Sean Eckerle, Jon Patrick Garcia Michele Harvey, Dominic King

Jacobs School of Music Honor Roll

Fiscal Year 2016-17

Individual, Corporate, and Foundation Supporters

The Jacobs School of Music wishes to recognize those individuals, corporations, and foundations who have made contributions to the school between July 1, 2016, and June 30, 2017. Those listed here are among the Jacobs School's most dedicated and involved benefactors, and it is their outstanding generosity that enables the IU Jacobs School of Music to continue to be the finest institution of its kind in the nation.

———— \$1,000,000 and Up ————

Louise Addicott-Joshi and Yatish Joshi

Robert L. Carpenter*

David H. Jacobs

———— \$100,000 - \$999,999 ————

W. W. Gasser, Jr.*

Elwood H. Hillis

Jeffrey Haynes Hillis

Thomas Pegg and Sherry Hustad

Robert O'Hearn*

Robert J. Waller*

Mary H. Wennerstrom

———— \$10,000 - \$99,999 ————

Gary and Kathy Z. Anderson

Carol V. Brown

J. Peter Burkholder and P. Douglas

McKinney

Charles J. Gorham

Frank C. Graves and Christine Dugan

Yona L. Grey

Wade C.* and Ann S. Harrison

Ted W. Jones

Shalin C. Liu

James J. Pellerite

Nancy Gray Puckett

Doris Rodatz

Virginia Schmucker*

W. Richard Shindle, Ph.D.

Curtis R. and Judy Chapline Simic

Beth Stoner and Bruce Weigand

Kim and Scott Storbeck

Robert D. Sullivan

Gregg and Judy Summerville

Charles and Lisa Surack

———— \$5,000 - \$9,999 ————

S. Sue Aramian

Nicholas M. Barbaro and Sue Ellen Scheppeke

Theodore W. Batterman

J. William Baus

The Boonshoft Family

Jack and Pam Boggs Burks

Susan Cartland-Bode and Henry J. Bode

Natalie Kunz Christoph*

William and Marion Crawford

Dale Diemer

Luba Edlina-Dubinsky

Stephany A. Dunfee

Jay S. and Karen S. Goodgold

Christian F. Gourley and Melinda Roy

Rita B. Grunwald

Lenore S. Hatfield

Dr. Monika H. and Dr. Peter H. Kroener

James F. Mellichamp, D.M.

P. Michael and Patricia Miller

Regina J. Momgaudas and Frederick A.

Bender

Delano L. Newkirk and Luzetta A. Newkirk

Jon and Annette Olson

Joanne E. Passet and Deborah S. Wehman

Kim and William Pressman

Thomas and Margaret Ragan

Stanley E. Ransom

Gwyn and Barbara Richards

John and Lislott Richardson

Jeannette J. Segel

Joanne L. Sprouse

Alice M. Tischler

Nancy and Allen White

Michael J. Williamson and Kathy Weston

Mimi Zweig

———— \$1,000 - \$4,999 ————

W. Jameson Aebersold, D.M., and

Sara A. Aebersold

Charlene and Donald Allen

Margaret and Charles Athey

Susan H. Backer

Linda A. Baker

Charles and Gladys Bartholomew

Brett and Amy Battjer

Norma B. Beversdorf-Rezits and

Joseph M. Rezits

Mark and Tanja Bisesi

W. Michael Brittenback and

William Meezan*

Roberta Brokaw

Craig and Crystal Bryant

Mary Louise and Schuyler Buck

Pamela S. Buell

Jean A. Burkholder

Donna L. Carroll

Bill and Anita Cast

Marcella and Scott Caulfield

Joyce E. Claffin

James and Carol Clauser

Mark and Katy Cobb

Carol and John Cornwell

Susan J. Devito

Jay and Jacqueline Dickinson

Melissa and Eric Dickson

Gary L. and Sandra G. Dowty

Jane and D. Kim Dunnick

Nile and Lois Dusdieker

Janet and Craig Edwards

Tom and Ellen Ehrlich

Daniel Feldt

Jann and Jon Fujimoto

Hollis and Robert Gaston

Paul and Ellen Gignilliat

Jack M. Gill, Ph.D. and Linda Challis Gill

Susan and Scott Gorham

Glen G. Graber

Roberta and Jim Graham

Souheil and Alejandra Haddad

Darlene and Rajih Haddawi

Elizabeth Hainen DePeters and

David A. DePeters

Bernhard C. Heiden*

J. Stanley Hillis, M.D. and Alice G. Hillis

L. Scott and Donna J. Horrall

Nancy O. Hublar

Michele and Robert Johns

Patricia C. Jones

Louis and Lynda Jordan

Linda and Kenneth Kaczmarek

Thomas R. Kasdorf

Mary E. Klink*

Marilyn Bone Kloss

Martin and Janie Kocman

George and Cathy Korinek

John and Nancy Korzec

Norman Krieger

Judith and Dennis Leatherman

Robert and Sara LeBien

Joon Lee

Harlan L. Lewis and Doris F. Wittenburg

Craig and Kara Lidell

P. A. Mack, Jr.

Brian D. Marcus

Lynne T. Marsh

Gary and Carol Matula

David E. McNeel
Geraldine and John Miller
Terry and Sara Miller
Jim and Jackie Morris
John T. and Barbara M. Morris
Lawrence Myers, Jr.
James Neff and Susan Jacobs-Neff
Carol S. Nole
Eugene O'Brien
Katheryn and Megumi Ohkubo
Massimo Ossi and Sarah Gaskill
Gary and Christine Potter
George and Wendy Powell
Al and Lynn Reichle

Stanley Ritchie
David and Karen Rohlfing
Katheryn Ruff and Stephen Lewis
Richard Searles
John and Jennifer Sejdinaj
Curtis and Aimee Shirley
John and Donna Slinkard
Janet S. Smith
Lee Ann Smith and Mark Webb
W. Craig Spence
Ellen Strommen
Linda Strommen
Mark A. Sudeith
Paula W. Sunderman

R. Michael Suttle and Carolyn C. Suttle
Karen M. Taylor
Randall and Deborah Tobias
Bruce and Madelyn Tribble
Brett and Diane Varner
Catherine and Larry Waynick
Charles H. Webb, Jr., D.M.
Theodore S. Widlanski
Mark Wiedenmayer
Tony J. Wiederhold
Donna Worth
Laura S. Youens-Wexler and
Richard M. Wexler
Susan and David Young

\$500 - \$999

Niel and Donna Armstrong
Kenneth and Georgina Aronoff
Elizabeth Baker and Richard R. Pugh
David Y. Bannard and Mary Ashley
Robert W. Bastian
Mark K. Bear
Franklin and Linda Bengtson
Jill and Lewis Bernstein
Karen and Arthur Bortolini
Joan C. Brand and Andre Watts
Jonathan P. Braude
Mary and Montgomery Brown
Aaron M. Burkhart
Phillip and Elizabeth Capasso
Steve and Sonya Clark
Miriam S. Clarke
J. Neal Cox
Donald and Myra Fisher
Myra and Stephen Foster
Suzanne and Frank Gault
Liliana and Dan Gehring
Jean-Louis Haguenuer
Larry and Barbara Hall
Dena Rae Hancock and Philip Robert Caito
R. Victor Harnack
Dr. Gene and Judy Hedrick
Carter and Kathleen Henrich

Allan F. Hershfield and Alexandra B. Young
Jolaine L. Hill
Larry and Susan Hodapp
Rona Hokanson
William and Karol Hope
Robert J. Hublar
James S. Humphrey, Jr.
Robin S. Hunden
Linda S. Hunt and Timothy M. Morrison
Jeffrey S. Jepsen
Kenneth and Elyse Joseph
Michael W. Judd
Christopher and Kathryn Klapheke
Virginia A. Krauss
James W. and Evelyn Whaley LaFollette
Scott R. Latzky and Teresa S. Weber
Stine M. Levy
Jon and Susan Lewis
Warren E. Loomis, III
Beverly A. McGahey
Ben F. Miller
Patrick and Frances Mitchell
Ambrose Ng
Daniel and Misty Novak
Eduardo A. Ostergren and Helena Jank
Sujal and Elizabeth Patel
P. Q. Phan

Donna and Robin Poyrnor
Robert L. Ralston
Robert and Joy* Renshaw
Jean and Donald Rhoads
Scott and Katherine Riley
Jerry and Cynthia Robinson
Randy W. Schekman and Nancy Walls
Arthur and Carole Schreiber
Catharine Schurtzius and John Dugan
Michael and Marilyn Schwartzkopf
Belinda D. Shaw
David A. Sheldon
Nathan and Joline Short
Martina and Frank Silberstein
James B. Sinclair and Sylvia Van Sinderen
Michael R. St John
Patricia J. Stiles and Jeffery Schauss
Susan C. Thrasher
Mary and Donald Trainor
Richard E. Walker
Alan and Elizabeth Whaley
Carolyn A. White
E. G. and Sharon White
Jonathan L. Yaeger and Karen Abravanel
Jessica A. Zmierski

\$250 - \$499

Roger and Carol Allman
James F. Ault, Jr.
Tom and Kay Baker
Samuel and Janet Baltzer
Frederick and Beth Behning
Renee and Wilhelm Bilgram
John and Mary Blumenthal
Ruth and Christopher Borman
Ruth O. Boshkoff
Sidney C. Bosley
Craig M. Brown
Jeffery L. Burch
John N. Burrows
Doris J. Burton
Mark and Andrea Buselli
Michael A. Camp
Samuel and Sue Carmichael
Sean and Geraldine Christie
Jonathan D. Chu
Scott A. Church
Richard K. Cook
Katherine R. Covington
Gretchen E. Craig
William A. Crowle
Mary Lynn Denne
Clarence H. and Judith Doninger
Sharon and John Downey
Alan and Juliet Duncanson
Gary Ebbs and Martha Lhamon

Deborah and Jeffrey Ewald
Mark and Jennifer Famous
Charles L. Fugo
David and Linda Giedroc
Charlotte E. Giles
Halina Goldberg
Alan R. Goldhammer
Ross A. Gombiner
Arlene Goter
Mary A. Gray
Kenneth C. Green, II
Robert A. Green
Bertram and Susan Greenspan
Kathryn and Joe Gunther
Christine Haack and Mark Hood
John and Teresa Harbaugh
Sheila B. Hass
Jerald and Anne Hayes
Lisa A. Herbstreit
Lynn M. Hooker and David A. Reingold
Mark and Mary Huebsch
Diane S. Humphrey
Warren W. Jaworski
Mark and Susan Johnson
Russell L. Jones
Carol R. Kelly
Jillian Kinzie and Joseph Throckmorton
Howard and Linda Klug
Lee A. Kohlmeier

Judy and Larry Lafferty
Bruce Leavitt
Gregory and Veronica Leffler
Amy L. Letson
Jerry and Jane Lewis
Barbara and John Lombardo
Earl Luetzelschwab and Debi Burkhart
Alma Brooks Lyle
Bryan L. Mack
Lisa K. Marum
Matthew and Kelly Mayer
Dr. Lawrence and Jennifer McBride
Janet and George McDonald
Ellen L. McGlothlin
Steven A. McNeil
Daniel R. Melamed
Ralph and Shirley Melton
Kathleen and Emanuel Mickel
G. Scott Mitchell and Rosalind Burwell
Douglas M. Morgan
Craig C. Morris and Jeffrey C. Brown
Kristine and Lynwood Mueller
Dana R. Navarro
James Ognibene
Herbert E. Parks
Diane Ragains-Slawin*
Heidi and Mike Ragan
Diana and Alan Rawizza
James P. Reismiller

David and Leanna Renfro
Joann Richardson
Timothy J. Riffle and Sarah M. McConnell
Paul and Barbara Ristau
David and Orli Robertson
Bruce Ronkin and Janet Zipes
Fran and Richard Rosman
Anya and Ronald Royce
Jon and Bambi Saxe

Cecile and Kenneth Schubert
Christopher and Janet Schwabe
Susanne Schwibs
Edward S. Selby
John and Lorna Seward
Jeffrey R. Sexton
Kenneth and Cynthia Stella
Konrad A. Strauss and Brenda L.
Nelson-Strauss

Boyd and Sally Sturdevant
Beth and Mark Taylor
David A. Temple and Victoria Schneider
Temple
Dennis and April Tini
Eric and Rina Turpen
John and Tamyra Verhuel
Carl Wiuff, Jr.
Giovanni Zanolello

\$100 - \$249

Paul T. Abrinko and Monika Eckfield
Lois C. Adams Miller
Janet and Paul Addison
Ann H. Adinamis Impiccicche
Harold B. Albright
Mr. Richard L. Alden and Ms. Ann T. Alden
Shirley T. Aliferis and Cary Passeroff
James A. Allison
George C. Alter and Elyce J. Rotella
Cletus E. Amlung
Joseph and Sharon Amlung
Robert F. Arnoe and Toby S. Strout*
Mary K. Aylsworth
James and Mary Babb
Mary R. Babbitt
Peggy K. Bachman
Jana and Tyler Baldwin
Sandra C. Balmer
Daniel Balog
Pamela Pfeifer Banks
Paul and Chlois Barkman
John and Patricia Barnes
Edward and Julia Barnicle
Allison and Mark Barno
Robert R. Bartalot
Lorie Selander Bartel and Allan R. Bartel
Susan D. Bartlett
Paula and John Bates
Barbara S. Baum
Cecelia Beam
Sue A. Beaty
Judy and Martin Becker
Sharon and William Beecroft
Suzanne K. Belbutoski
Audrone M. Bentham
Olesia and Andrew Bihun
Cheryl A. Bintz
David and Judy Blackwell
Ronald and Regina Blais
Gayle and Heinz Blankenburg
Julian M. Blumenthal
William H. Bocoek
Tricia and David Borcherding
Christopher and Deborah Botos
Joan H. Bowden
Cynthia and Bennet Brabson
Marta and Scot Bradley
Elizabeth M. Brannon
Peter W. Brengel
Louis and Debra Britton
Warren J. Brodine and Mark A. Rhein
Richard and Gail Brooks
Joseph M. Brown
Lawrence W. Browne
Edward P. Bruenjes
Margaret and Philip Brummit
Mark and Jody Bruns
William R. Buck
V. Barbara Bush
Brett H. Butler
Rebecca and James Butler
W. Leland and Helen M. Butler
Margaret R. Buttermore
Marie and James Butz
Phyllip B. Campbell

Jose F. Caro
Maria D. Carrasquillo and Michael Maxson
Walter D. Carroll
Carolyn and Barrett Carson
Eleanor and Charles Carter
Linda L. Case
Susan and Robert Cave
Harriet R. Chase
Janice O. Childress
Hyesik Choi
Matthew R. Christ and Sophia C. Goodman
Cynthia and Alfred Cirome
Lynda F. Clendenning and Robert L. Fuller
Richard and Laura Clifton
Virginia B. Coats
Kristin J. Coffey
Timothy J. Coffman and Elizabeth M.
Liederbach-Coffman
Richard and Lynn Cohee
Robert and Marcia Coleman
James D. Collier
Ryan B. Comerford
Mark R. Conrad
Todd and Darla Coolman
Edmund Cord
Kevin and Laura Cottrill
Cynthia McAllister Crago and
Don H. Crago
Ray and Molly Cramer
Proctor Crow, Jr.
Cheryl and Bradley Cunningham
J. Daniel and Mary Cunningham
Michael G. Cunningham
Donna and David Dalton
Eugene B. Daniels
Janice E. Daniels
Gerald and Janet Danielson
Samuel J. Davis, Jr.
Sharon and Gary Davis
Conrad J. Dejong
Barbara and Richard Dell
Jason Derrick
Patrick and Karen Dessent
Nadine and Holm Diercks
Susan B. Dirgins-Friend and Doug Friend
Barbara and Richard Domek
Colleen M. Donohue
Paul T. Dove
Hannah L. Dubina
Margaret J. Duffin
Gregory S. Dugan
Kevin J. Duggins
Silsby S. Eastman
Robert and Robin Eatman
Patricia Eckstein
David B. Edgeworth
Frank and Vickie Edmondson
Marjorie and John Egger
Tom and Kathy Eggleston
Christopher and Meagan Eller
Anna A. Ellis
Michael J. Ellis
Mary and Herman Emmert
Elaine and Philip Emmi
Stanley and Pamela Engle

Kathryn J. Faith-Greene
Lauren Feaux
Jean E. Felix
Arthur and Therese Fell
Salvatore and Carol Ferrantelli
Phyllis B. Ferrell
Joseph P. Fiacable
George and Jo Fielding
Mary Ellen Fine
Constance C. Ford
Jean and Roger Fortna
Bruce and Betty Fowler
Linda A. Frauenhoff
Agnes H. Friel
Steven and Anne Gaylord
Susan Gilbert
Lorraine Glass-Harris
Sylvia S. Gormley
Rena and Larry Goss
Philip C. Gough
Robert and Sheri Gray
Gretchen M. Green
Lisa B. Greenfield and Frank Nothaft
Pamela C. Griffel
Ryan Grimes
Teddy and Phyllis Gron
Janet M. Gross and Walter C. Gross, Jr.
Robert M. Gumbel
Chun-Fang B. Hahn
Michelle K. Hahn
Steve and Jo Ellen Ham
Linda Y. Hammel
Eleanor and David Hammer
Charlene A. Harb
Andrew and Mary Harper
Melody Harrington
Martha and Stephen Harris
Judy Hardley
Skaidrite and F. Michael Hatfield
Debra and John Hatmaker
Thomas and Kimberly Hauser
Clayton and Ellen Heath
W. Harvey Hegarty, Ph.D. and Connie
Hegarty
Marilyn and Chuck Hensley
Daniel and Catherine Herdeman
Stephen and Diane P. Hiatt
Leslie W. Hicken
J. William and Karen Hicks
Patricia L. Hicks
Linda G. Higginbotham and
Bradley R. Leftwich
Jonathan Higgins
Suzanne L. Hillis
Thomas and Janice Hodson
Ruth and Lowell Hoffman
Chris L. Holmes and David M. Burkhardt
Ray and Phyllis Horton
Emily L. Hostetter
Dewey W. Howard
Patricia and Thomas Howenstine
Gaye Hudson
Cindy and John Hughes
Ivan and Anne Hughes
Marcia A. Hughes

Sally Foreman Humphreys and
Llewellyn B. Humphreys
Masanori and Seiko Igarashi
Roger and Carol Isaacs
Stefanie H. Jacob and Scott K. Tisdell
Carole L. James
Thomas W. James
Charles and Laurie Jarrett
Glenn E. Jenne
Kathryn and Robert Jessup
Edith E. Johnson and Jason Overall
Kathleen L. Johnson
Hilda Jones
Kristin and Wayne Jones
Michael and Kimberly Kapps
Kathleen Katra
Jenice and James Keeler
Marilyn J. Keiser
Dennis D. Keithley
Ken and Elaine Keltner
Bonita S. Kern
Kristin and Steven Kessler
Melissa A. Kevorkian and Jack R. Fields
Kathy Kienzie
John and Shelley Killacky
Myrna M. Killey
Charles A. Kimbrough
Cynthia L. King
Jack and Julie King
Kyle W. King
Skye G. Kinlaw
Meredith K. Kirkpatrick
Karen L. Klages
Brandon and Bethany Knight
Joan D. Knollenberg
George J. Kozack
Peggy and Brian Kozminski
Joseph C. Kraus
Kate M. Kroll
Ursula M. Kuhar
David S. Kunstler
David and Judith Lahm
Cynthia and James Lambrecht
Paul and Amy Lampi
Aaron D. Lan
Thomas and Nancy Lancaster
Betty E. Landis
Beverly E. Landis and Alan R. Billingsley
Nicole M. Langert
Debra and Robert Lee
James A. Leick
Anna M. Leppert-Largent and
Gregory H. Largent
Elliot R. Lewis and Christine M. Bauer
Joseph J. Lewis
Ann and Scott Liberman
Marie Lindell
Curt A. Littlejohn
Lynn and Matthew Litwiler
Guy and Connie Loftman
John E. Lopatka and Marie Reilly
Elizabeth and Ray Lopez
Charles Lopinto
Donna and Paul Love
Marie T. Lutz
Frances M. Madachy
Robert W. Magnuson
David and Barbara Malson
Mayer and Ellen Mandelbaum
Leslie and Joseph Manfreda
Dr. Rochelle G. Mann
Rudy T. Marozzi
Lynne and Richard Marks
John S. Marshall
Barbara Massie
Jim K. Matthews and Sallie Liesmann
Matthews

Gary S. May
William and Marcille McCandless
Philip and Elizabeth McClintock
Marie M. McCord
Winnifred L. McGinnis
Grady and Melissa McGrannahan
Jerry A. and Jane P. McIntosh
Larry S. McKee
James D. McLuckie
Mary Jo McMillan
Marcia and Michael McNelley
Sean M. McNelley
Ted and Bess Megremis
Owen and Christine Melton
Stephen and Judy Merren
Herbert C. Miller
Mary A. Miller
Thomas J. Miller
Jean R. Minneman
Linda M. Mintener and Robert M. Jones
Joseph T. Mitchell
Richard J. Mlynarski
Rosalind E. Mohnsen
Jay E. Montgomery
Patricia and Philip Moreau
T. Earline Moulder and R. David Plank
Sara and Allan Murphy
Ann E. Murray and Michael Hurtubise
Ray and Wendy Muston
Dean and Carol Myshrall
Loretta Nelson
Melvin and Beauretie Nevel
Kent A. Newbury
David L. Newby
Gail C. Newmark
Kathleen C. Nicely
Jeffrey and Jane Nierman
Carol Kniebusch Noe
Gloria G. Noone
Margaret V. Norman
Martha H. Noyes
Joan C. Olcott
Melinda P. O'Neal
Patricia and Eric Orth
Mary A. Owings
Lee and Jim Parker
Mara E. Parker and Andrew J. Cogbill
Sandra B. Parker
Peggy W. Paschall
Marilyn J. Patton
James and Eleanor Pauloski
Ron A. Pennington
Travis A. Peterson
Wayne H. Peterson
Richard and Kathleen Phillips
Jeffrey L. Plonski
Karen and Gerry Porter
Belinda M. Potoma and Michael R. Fish
James H. Potts
Gregory L. Powell and Miriam McLeod Powell
Darlene and Stephen Pratt
Jamie and Kathy Hauser Pratt
Sylvanna T. Precht
Richard and Mary Pretat
Patricia and Thomas Price
R. Alan and Brenda Quick
Jonathan D. Raff and Maren Pink
John Rathgeb and Alan Chadrijan
Helen P. Reich
Phyllis E. Relyea
Carolyn J. Rice
Ronald and Marcia Rice
Donald E. Ritter
Samuel and Valerie Roberts
Roger Roe
Donna Fambrough Ronco and
Edward C. Ronco

James and Maureen Ross
Ryan S. Rottman and Caitlyn E. Krueer
Eugene and Norma Rousseau
Gerald J. Rudman
Marjorie J. Rust
Juliet Sablosky
Michael W. Sanders
Stephanie Sant'Ambrogio and Gary
Albright
V. Gayle Sarber
John and Donna Sasse
Harry and Patricia Sax
Andrew R. Schemm and Andrew G. Myers
Daniel E. Schulz
Fritz and Anne Schumann
Beverly C. Scott and Sylvia Patterson-Scott
John and Anna Scott
Perry and Lisa Scott
Mary E. Scroggs
Laurie and William Sears
John A. Seest
Mark and Gerri Shaffer
Nancy and Stephen Shane
Nadine E. Shank
Merry and John Shapiro
Mark Sheldon
Richard and Karen Shepherd
Larry and Debra Sherer
Richard and Denise Shockley
Thomas and Donna Shriner
Cecily Shull and Robert Wilson
W. Robert and Jill Siddall
Samuel and Theresa Sievers
Edwin L. Simpson
Kevin M. Sipe
Beverly and Stuart Skelley
George Smedley
Angelica and Fred Smith
John and Juel Smith
Kenneth Smith
Linda K. Smith
Melissa and Joshua Smith
Ricky G. Smith
Robert L. Smith and Janice L. Lesniak
Estus Smith
Steve and Mary T. Snider
John L. Snyder, Jr.
Sandra and Gary Snyder
Nancy L. Sonntag
James and Carolyn Sowinski
Paul V. Spade
Sharilyn and John Spicknall
Don M. Squires
Darell and Susan Stachelski
Chip Stapleton
Paul B. Stephenson and Maria K. Schmidt
Scott A. Stewart and Jeffrey D. Clanton
Tom and Melinda Straley
Beverly O. Stratman
James L. Strause
Jessica R. Suchy-Pilalis and Labros E. Pilalis
Cynthia and Walter Szymanski
Elizabeth Szymanski
Leaeta and Rick Taffinger
Nancy A. Tardy
Kathleen Taylor
Artemisia and Theodore Thevaos
Shelley M. Thomason
Jonathan N. Towne and Rebecca J. Noreen
Catherine L. Trean
Alice and Philip Trimble
Tamara B. Tritschuh
Alice and John Tweedle
Beth and Kyle Twenty
Mary E. Ulrey
Robert and Anna Urlick
Dianne Vars

Matthew and Therese Veldman
Sue Loeppert Visscher and Daniel W. Visscher
Elaine and Larry Wagner
Sharon P. Wagner
Cherilee and James Walker
George L. Walker and Carolyn M.
Lipson-Walker
Ruth H. Walker
Susan L. Walker
Cynthia and Jay Wallin
Ruby Wampler
John M. Ware
Renee Watts
Mary and Paul Waytenick
Rebecca and Wayne Weaver

Fran and Gene Weinberg
W. Michael and Sue Wells
Thomas Wendler
Phyllis C. Wertime
Constance E. West
Wendy and Matthias Westphal
Cyndi and Craig Weyers
Mark and Jan Wheeler
Anthony and Teresa White
Lloyd and Barbara White
David E. Wick
Thelma J. Wilcox
Ross B. Wilkerson
Dolores Wilson
Lawrence A. Wilson

Donna and Richard Wolf
Teresa and Peter Wolf
Michele and Gary Wolff
Blue B. Woman
Sarah and Chad Wood
Earl S. Woodworth
Karen and Danny Wright
G. Eugene Yates
Jamie and Rick Yemm
Jeffery P. Zaring
Joan and David Zaub
Joyce and Larry Zimmerman
Conrad and Debora Zimmermann

**deceased*

Corporations and Foundations

———— \$100,000 and Up ————

Georgina Joshi Foundation, Inc.

Korea Foundation

———— \$25,000 - \$99,999 ————

Allen Whitehill Clowes Charitable
Foundation, Inc.
Barbro Osher Pro Suecia Foundation

Old National Wealth Management
Schwab Charitable Fund

Summer Star Foundation for Nature, Art and
Humanity, Inc.

———— \$10,000 - \$24,999 ————

C. Richard and Verna Louise Johnson
Foundation, Inc.
Central Indiana Community Foundation

Fidelity Charitable Gift Fund
Harry Kraus Survivor Trust

Sweetwater Sound, Inc.
University of Melbourne

———— \$1,000 - \$9,999 ————

Avedis Zildjian Company
Bank of America Corp. Foundation
Bloomington Community Band, Inc.
Bloomington Surgical Associates
Blue Whale Jazz Club
Camerata, Inc.
Caterpillar Foundation
Chevron Phillips Chemical Company LLC
Community Foundation of Greater Fort
Wayne, Inc.
Early Music America

German American Bank
Greater Kansas City Community Foundation
The Harvey Phillips Foundation, Inc.
Indiana University Alumni Association
Indiana University Librarians Association
The International Center
Kalamazoo Community Foundation
Katherine C. Lazerwitz Irrevocable Children's
Trust
Law Office of Curtis E Shirley
Marvin Music Co, Inc.

National Christian Foundation
Network for Good
OneAmerica Financial Partners, Inc.
Opera Illinois League
Paulsen Family Foundation
Robert Carwithen Music Foundation
Shilling Sales, Inc.
Smithville Charitable Foundation, Inc.
Theodore W. Batterman Family
Foundation, Inc.
Vanguard Charitable Endowment Program

Annual Giving Circles

The Indiana University Jacobs School of Music Annual Giving Circles include individuals dedicated to making a difference in the cultural life of the university. These unrestricted gifts of opportunity capital support the areas of greatest need, including financial aid, faculty research, academic opportunities, and visiting artists.

Dean's Circle

Visionary Members

———— \$10,000 and Up ————

Gary and Kathy Z. Anderson

David H. Jacobs

Charles and Lisa Surack

Strategic Members

———— \$5,000 - \$9,999 ————

Nicholas M. Barbaro and Sue Ellen Scheppeke
Jack and Pam Boggs Burks
William and Marion Crawford
Stephany A. Dunfee

Jay S. and Karen S. Goodgold
Frank C. Graves and Christine Dugan
Dr. Monika H. and Dr. Peter H. Kroener
P. Michael and Patricia Miller

Delano L. Newkirk and Luzetta A. Newkirk
Joanne E. Passet and Deborah S. Wehman
Jeannette J. Segel
Joanne L. Sprouse

Contributing Members

\$1,000 - \$4,999

Margaret and Charles Athey
Linda A. Baker
Charles and Gladys Bartholomew
William M. Brittenback and William Meezan*
Craig and Crystal Bryant
Bill and Anita Cast
James and Carol Clauser
Mark and Katy Cobb
Carol and John Cornwell
Melissa and Eric Dickson
Jane and D. Kim Dunning
Tom and Ellen Ehrlich
Paul and Ellen Gignilliat
Jack M. Gill, Ph.D. and Linda Challis Gill
Roberta and Jim Graham
Darlene and Rajih Haddawi
J. Stanley Hillis, M.D. and Alice G. Hillis

Louis and Lynda Jordan
Linda and Kenneth Kaczmarek
Thomas R. Kasdorf
Mary E. Klink*
Marilyn Bone Kloss
George and Cathy Korinek
John and Nancy Korzec
Robert and Sara LeBien
Craig and Kara Lidell
P. A. Mack, Jr.
Brian D. Marcus
David E. McNeel
Gerry and John Miller
Terry and Sara Miller
Jim and Jackie Morris
John T. and Barbara M. Morris
Lawrence Myers, Jr.

James Neff and Susan Jacobs-Neff
Carol S. Nole
Eugene O'Brien
Gary and Christine Potter
Al and Lynn Reichle
Richard Searles
John and Jennifer Sejdinaj
Curtis R. and Judy Chapline Simic
Lee Ann Smith and Mark Webb
W. Craig Spence
Mark A. Sudeith
Paula W. Sunderman
Randall and Deborah Tobias
Bruce and Madelyn Tribble
Charles H. Webb, Jr., D.M.
Mark Wiedenmayer
Mike Williamson and Kathy Weston

Artist's Circle

\$500 - \$999

Niel and Donna Armstrong
Elizabeth Baker and Richard R. Pugh
David Y. Bannard and Mary Ashley
Robert W. Bastian
Mark K. Bear
Franklin and Linda Bengtson
Karen and Arthur Bortolini
Mary and Montgomery Brown
Miriam S. Clarke
Myra and Stephen Foster
Liliana and Dan Gehring
Carter and Kathleen Henrich

Jolaine L. Hill
James S. Humphrey, Jr., Ph.D.
Robin S. Hunden
Jeffrey S. Jepsen
Virginia A. Krauss
James W. and Evelyn Whaley LaFollette
Scott R. Latzky and Teresa S. Weber
Stine M. Levy
Jon and Susan Lewis
Patrick and Frances Mitchell
Daniel and Misty Novak
Donna and Robin Poynor

Jean and Donald Rhoads
Scott and Katherine Riley
Jerry and Cynthia Robinson
Randy Schekman and Nancy Walls
Arthur and Carole Schreiber
Catharine Schutzzius and John Dugan
David A. Sheldon
Nathan and Joline Short
James Sinclair and Sylvia Van Sinderen
Patricia Stiles and Jeffery Schauss
Richard E. Walker
E. G. and Sharon White

\$250 - \$499

Samuel and Janet Baltzer
Renee and Wilhelm Bilgram
Ruth and Christopher Borman
Doris J. Burton
Katherine R. Covington
William A. Crowe
Mary Lynn Denne
Clarence H. and Judith Doninger
Sharon and John Downey
Alan and Juliet Duncanson
Mark and Jennifer Famous
Charles L. Fugo
Charlotte E. Giles
Ross A. Gombiner
Arlene Goter
Bertram and Susan Greenspan
Sheila B. Hass

William and Karol Hope
Diane S. Humphrey
Russell L. Jones
Carol R. Kelly
Jillian Kinzie and Joseph Throckmorton
Howard and Linda Klug
Lee A. Kohlmeier
Gregory and Veronica Leffler
Amy L. Letson
Barbara and John Lombardo
Earl Luetzelschwab and Debi Burkhardt
Lisa K. Marum
Kathleen and Emanuel Mickel
Kristine and Lynwood Mueller
Dana R. Navarro
James Ognibene
Herbert E. Parks

Diane Ragains-Slavin*
James P. Reismiller
David and Leanna Renfro
Paul and Barbara Ristau
Bruce Ronkin and Janet Zipes
Christopher and Janet Schwabe
Edward S. Selby
Jeffrey R. Sexton
Boyd and Sally Sturdevant
Beth and Mark Taylor
David A. Temple and Victoria Schneider
Temple
John and Tamyra Verheul
Alan and Elizabeth Whaley
Carl Wiuff, Jr.

\$100 - \$249

Paul Abrinko and Monika Eckfeld
Lois C. Adams Miller
Shirley T. Aliferis
Joseph and Sharon Amlung
Mary K. Aylsworth
James and Mary Babb
Peggy K. Bachman
Pamela Pfeifer Banks
John and Patricia Barnes
Robert R. Bartalot
Cecelia Beam
Sue A. Beaty
Judy and Martin Becker
Sharon and William Beecroft

Suzanne K. Belbutoski
Audrone M. Bentham
Olesia and Andrew Bihun
Cheryl A. Bintz
Ronald and Regina Blais
Gayle and Heinz Blankenburg
Joan H. Bowden
Elizabeth M. Brannon
Peter W. Brengel
Lawrence W. Browne
William R. Buck
John N. Burrows
V. Barbara Bush
Rebecca and James Butler

Susan and Robert Cave
Harriet R. Chase
Janice O. Childress
Hyesik Choi
Scott A. Church
Cynthia and Alfred Cirome
Virginia B. Coats
Richard and Lynn Cohee
Robert and Marcia Coleman
Mark R. Conrad
Richard K. Cook
Cynthia McAllister Crago and
Don H. Crago
Michael G. Cunningham

Eugene B. Daniels
Gerald and Janet Danielson
Conrad J. Dejong
Barbara and Richard Dell
Jason Derrick
Patrick and Karen Dessent
Susan J. Devito
Barbara and Richard Domek
Paul T. Dove
Hannah L. Dubina
Margaret J. Duffin
Silsby S. Eastman
Robert and Robin Eatman
Patricia Eckstein
Frank and Vickie Edmondson
Anna A. Ellis
Michael J. Ellis
Mary and Herman Emmert
Stanley and Pamela Engle
Deborah and Jeff Ewald
Kathryn J. Faith-Greene
Donna Fambrough Ronco and
Edward C. Ronco
Lauren Feaux
Salvatore and Carol Ferrantelli
Joseph P. Fiacable
Mary Ellen Fine
Constance C. Ford
Bruce and Betty Fowler
Steven and Anne Gaylord
Sylvia S. Gormley
Rena and Larry Goss
Robert and Sheri Gray
Lisa Greenfield and Frank Nothhaft
Pamela C. Griffel
Teddy and Phyllis Gron
Roberta M. Gumbel
Chun-Fang B. Hahn
Linda Y. Hammel
Eleanor and David Hammer
Charlene A. Harb
Andrew and Mary Harper
Martha and Stephen Harris
Debra and John Hatmaker
Clayton and Ellen Heath
W. Harvey Hegarty, Ph.D., and Connie
Hegarty
Marilyn and Chuck Hensley
Daniel and Catherine Herdeman
Suzanne L. Hillis
Ruth and Lowell Hoffman
Emily L. Hostetter
Gaye Hudson
Ivan and Anne Hughes
Masanori and Seiko Igarashi
Stefanie H. Jacob and Scott K. Tisdell

Carole L. James
Kathryn and Robert Jessup
Edith Johnson and Jason Overall
Kathleen L. Johnson
Myrna M. Killey
Joan D. Knollenberg
Peggy and Brian Kozminski
Joseph C. Kraus
Ursula M. Kuhar
David S. Kunstler
Thomas and Nancy Lancaster
Debra and Robert Lee
James A. Leick
Joseph J. Lewis
John Lopatka and Marie Reilly
Charles Lopinto
Donna and Paul Love
Marie T. Lutz
Frances M. Madachy
David and Barbara Malson
Dr. Rochelle G. Mann
Rudy T. Marcozzi
Lynne and Richard Marks
Jim K. Matthews and Sallie Liesmann
Matthews
Gary S. May
William and Marille McCandless
Philip and Elizabeth McClintock
Ellen L. McGlothin
James D. McLuckie
Mary Jo McMillan
Stephen and Judy Merren
Mary A. Miller
Jean R. Minneman
Linda Mintener and Robert Jones
Joseph T. Mitchell
Rosalind E. Mohnsen
Jay E. Montgomery
Patricia and Philip Moreau
Ann Murray and Michael Hurrubise
Kent A. Newbury
David L. Newby
Kathleen C. Nicely
Gloria G. Noone
Margaret V. Norman
Martha H. Noyes
Mary A. Owings
Mara Parker and Andrew Cogbill
Peggy W. Paschall
Jeffrey L. Plonski
Gregory Powell and Miriam McLeod Powell
Sylvanna T. Prechtel
Patricia and Thomas Price
R. Alan and Brenda Quick
Diana and Alan Rawizza
Helen P. Reich

Phyllis E. Relyea
Carolyn J. Rice
Donald E. Ritter
Roger Roe
Michael W. Sanders
Stephanie Sant'Ambrogio and Gary Albright
V. Gayle Sarber
Fritz and Anne Schumann
Beverly Scott and Sylvia Patterson-Scott
Perry and Lisa Scott
Laurie and William Sears
John and Lorna Seward
Nancy and Steve Shane
Merry and John Shapiro
Richard and Karen Shepherd
Thomas and Donna Shriner
Cecily Shull and Robert Wilson
W. Robert and Jill Siddall
Edwin L. Simpson
Estus Smith
John and Juel Smith
Linda K. Smith
Kenneth Smith
Robert L. Smith and Janice L. Lesniak
Steve and Mary T. Snider
John L. Snyder, Jr.
Darell and Susan Stachelski
Paul Stephenson and Maria Schmidt
Tom and Melinda Straley
Beverly O. Stratman
James L. Strause
Kathleen Taylor
Jonathan Towne and Rebecca Noreen
Alice and Philip Trimble
Alice and John Tweedle
Dianne Vars
Elaine and Larry Wagner
Cherilee and James Walker
Ruth H. Walker
John M. Ware
Mary and Paul Waytenick
Rebecca and Wayne Weaver
Fran and Gene Weinberg
Mark and Jan Wheeler
Lloyd and Barbara White
Thelma J. Wilcox
Dolores Wilson
Lawrence A. Wilson
Donna and Richard Wolf
Teresa and Peter Wolf
Michele and Gary Wolff
Blue B. Woman
Karen and Danny Wright
Joyce and Larry Zimmerman

**deceased*

Leadership Circle

Members of the Leadership Circle have contributed lifetime gifts of \$100,000 or more to the Indiana University Jacobs School of Music. We gratefully acknowledge the following donors, whose generosity helps the school reach new heights and build a sound financial framework for the future.

Over \$10,000,000

The Estate of Barbara M. Jacobs

David H. Jacobs

Lilly Endowment, Inc.

Over \$1,000,000

Louise Addicott-Joshi and Yatish Joshi
Gary and Kathy Z. Anderson
The Estate of Robert L. Carpenter
Cook, Incorporated
Dorothy Richard Starling Foundation

The Estate of Juanita M. Evans
Georgina Joshi Foundation, Inc.
Jack M. Gill, Ph.D., and Linda Challis Gill
Jack* and Dora Hamlin
Krannert Charitable Trust

The Estate of Juana Mendel
The Estate of Clara L. Nothacksberger
The Estate of Anne and Paul Plummer
Paul Dean Plummer Trust

\$500,000 - \$999,999

The Estate of Ione B. Auer
Alexander S. Bernstein
Jamie Bernstein
Nina Bernstein Simmons
The Estate of George A. Bilque, Jr.
Jack and Pam Boggs Burks
Carl and Marcy Cook
Gayle T. Cook
The DBJ Foundation

The Estate of Mary M. and Frederick G.
Freeburne
The Estate of Wilbur W. Gasser and
Mary Kratz Gasser
Ann and Gordon Getty Foundation
The Estate of Eva M. Heinitz
Sandy Littlefield
Shalin C. Liu
Arthur R Metz Foundation

Murray and Sue Robinson
Richard and Barbara Schilling
The Estate of Eva Sebek
Summer Star Foundation for Nature, Art
and Humanity, Inc.
The Estate of Ruth E. Thompson
The Estate of Herman B Wells

\$250,000 - \$499,999

W. Jameson Aebersold, D.M. and
Sara A. Aebersold
The Estate of Wilfred C. Bain
Olimpia F. Barbera
The Estate of Angeline M. Battista
The Estate of Sylvia F. Budd
The Estate of Marvin Carmack
Christel DeHaan
Christel DeHaan Family Foundation
Beatrice P. Delany Charitable Trust
The Estate of Alvin M. Ehrct, Jr.
The Estate of Lucille de Espinosa
The Estate of Richard E. Ford
Wade C.* and Ann S. Harrison
The Estate of Emma. B Horn

IBM Global Services
Irwin-Sweeney-Miller Foundation
The Estate of David H. Jacobs
The Estate of Harold R. Janitz
Korea Foundation
Dr. Monika H. and Dr. Peter H. Kroener
The Estate of Jeanette C. Marchant
The Estate of Nina Neal
Presser Foundation
The Estate of Ben B. Raney, Jr.
Joy and Rudolph* Rasin
The Estate of Naomi Ritter
The Estate of Virginia Schmucker
The Estate of Lee E. Schroeder
Scott C. and Kay Schurz

The Estate of Maidee H Seward
Bren Simon
Cynthia L. & William E. Simon
The Cynthia L. & William E. Simon, Jr.
Foundation
David and Jacqueline Simon
Deborah J. Simon
Herbert and Porntip Simon
The Estate of Melvin Simon
The Estate of Samuel W. Siurua
Paul and Cynthia Simon Skjodt
Marianne W. Tobias
Mary H. Wennerstrom and
Leonard M. Phillips*
The Estate of John D. Winters

\$100,000 - \$249,999

Allen Whitehill Clowes Charitable
Foundation, Inc.
The Estate of Ursula Apel
The Estate of Fred and Martha Arto
The Estate of Robert D. Aungst
Artur Balsam Foundation
Barbro Osher Pro Suecia Foundation
Robert M. Barker and Patsy D. Fell-Barker
Theodore W. Batterman Family
Foundation, Inc.
Bennet and Cynthia Brabson
Brabson Library and Education Foundation
The Estate of Jean R. Branch
The Estate of Mildred J. Brannon
The Estate of Frances A. Brockman
Joan and Marvin Carmack Foundation
Susan Cartland-Bode and Henry J. Bode
The Estate of Aileen Chitwood
Cole & Kate Porter Memorial Grad Fellow
in Music Trust
Jean and Doris Creek
The Estate of Mavis M. Crow
The Estate of Susie J. Dewey

The Estate of M. Patricia Doyle
Luba Edlina-Dubinsky
The Estate of William H. Earles
The Estate of Robert A. Edwards
Marianne V. Felton, Ph.D.
Ford Meter Box Company, Inc.
The Estate of Thomas L. Gentry
Georgia Wash Holbeck Living Trust
Paul and Ellen Gignilliat
The Estate of Monroe A. Gilbert
The Estate of Theodore C. Grams
The Estate of Marjorie Gravit
The Estate of David C. Hall
Steve and Jo Ellen Ham
The Estate of Margaret H. Hamlin
Robert and Sandra Harrison
Harrison Steel Castings Company
The Estate of Jascha Heifetz
Elwood H. Hillis
Jeffrey Haynes Hillis
Ruth W. Johnson
The Estate of Eleanor Knapik
The Estate of Eugene Knapik

Robert and Sara LeBien
George William Little, Jr. and B. Bailey Little
P. A. Mack, Jr.
David and Neill Marriott
Susan H. McDonald
The Estate of Margaret E. Miller
The Estate of Elisabeth P. Myers
The Estate of Jean P. Nay
Delano L. Newkirk and Luzetta A. Newkirk
The Estate of Richard J. Osborn
Penn Asset Equity LLC
The Estate of Charlotte Reeves
The Estate of Dagmar K. Riley
Stephen L. and Margaret Cole Russell
Fred and Arline Simon
The Estate of Martha K. Siurua
Smithville Telephone Company, Inc.
The Estate of Maxine M. Talbot
Technicolor USA, Inc.
The Estate of Alice C. Thompson
The Estate of Mary C. Tilton
Robert J. Waller*
Kenneth C. Whitener, Jr.

The Legacy Society

The Legacy Society at the Indiana University Jacobs School of Music honors the following individuals, who have included the Jacobs School as a beneficiary under their wills, trusts, life insurance policies, retirement plans, and other estate-planning arrangements.

David* and Ruth Albright
Richard and Ann Alden
John and Adelia Anderson
Gary and Kathy Z. Anderson
Peggy K. Bachman
Dennis and Virginia Bamber
J. William Baus
Mark and Ann* Bear
Christa-Maria Beardsley
Michael E. Bent
Neil A.* and Dixie D. Bjurstrom
Julian M. Blumenthal
Richard and Mary Bradford
W. Michael Brittenback and
William Meezan*
Marjorie Buell
Pamela S. Buell
Gerald and Elizabeth Calkins
Sarah Clevenger
Eileen Cline
Cynthia McAllister Crago and
Don H. Crago
Jack and Claire Cruse
D. Michael Donathan, Ph.D.
Luba Edlina-Dubinsky
Stephany A. Dunfee
Keith E. Eby
David and Arlene Effron
Sandra Elkins
Michael J. Finton
Philip* and Debra Ford
Marcella and Donald* Gercken
Glen G. Graber
Jonathan L. Gripe
Jack* and Dora Hamlin
Charles Handelman

James R. Hasler
David and Mildred Hennessy
Daniel F. Hewins
Jeffrey H. Hillis
David M. Holcenberg
Julian L. Hook
William T. and Kathryn* Hopkins
David E. Huggins
Harriet Ivey
Ted W. Jones
Myrna M. Killey
Martha R. Klemm
Marilyn Bone Kloss
Herbert Kucbler and Phil Evans
Ray and Lynn Lewis
Harlan L. Lewis and Doris F. Wittenburg
Nancy Liley
Ann B. Lilly
George William Little, Jr. and
B. Bailey Little
Charles J. Marlatt
Susan G. McCray
Douglas McLain
Sonna and Don Merk
Robert A. Mix
Cyndi Dewees Nelson and Dale Nelson
Delano L. Newkirk and Luzetta A.
Newkirk
Fred Opie and Melanie S. Spewock
John and Margaret Parke
James J. Pellerite
Jean R. Peters
Jack W. Porter
Nancy Gray Puckett
Stanley E. Ransom
Robert and Carlene Reed

Al and Lynn Reichle
Gwyn and Barbara Richards
Ilona Richey
Murray and Sue Robinson
D. Patricia and John W.* Ryan
Barbara and Arthur Sable
Roy* and Mary Samuelsen
Vicki J. Schaeffer
John and Lorna Seward
Karen Shaw
Odette F. Shepherd
W. Richard Shindle, Ph.D.
Curtis R. and Judy Chapline Simic
Catherine A. Smith
George P. Smith, II
Steve and Mary T. Snider
Craig A. Stewart and Marion Krefeldt
William D. and Elizabeth Kiser Strauss
Robert D. Sullivan
R. Michael Suttle and Carolyn C. Suttle
Hans* and Alice M. Tischler
LCDR Jeffrey Stewart Tunis
Henry and Celicia Upper
Nicoletta Valletti
Robert J. Waller* and Linda Bow
Patrice M. Ward-Steinman
Charles and Kenda* Webb
Michael D. Weiss
Mary H. Wennerstrom and
Leonard M. Phillips*
Robert E.* and Patricia L. Williams
Michael Williamson and Kathy Weston

* deceased



SOCIETY OF THE
FRIENDS OF MUSIC

Friends of Music Honor Roll

Fiscal Year 2016-17

The mission of the Society of the Friends of Music is to raise scholarship funds for deserving, talented students at the Indiana University Jacobs School of Music. The society was established in 1964 by a small group led by Herman B Wells and Wilfred C. Bain. We are pleased to acknowledge outright gifts made between July 1, 2016, and June 30, 2017.

Friends of Music

———— **\$10,000 and Above** ————

Jim and Joyce Grandorf

Larry and Celeste Hurst

Perry J. Maull

———— **\$5,000 - \$9,999** ————

Robert Barker and Patsy Fell-Barker
W. Leland and Helen M. Butler

Eleanor J. Byrnes
Mary Anne and Edward Fox

Steve and Jo Ellen Ham

Herman B Wells Circle

Gold

———— **\$2,500 - \$4,999** ————

James and Susan Alling
Anne T. Fraker
Herbert Kuebler and Phil Evans

Julia and Charles McClary
President Michael A. McRobbie and
First Lady Laurie Burns McRobbie

Karen Shaw

Silver

———— **\$1,000 - \$2,499** ————

Ruth Albright
Janet and William Anderson
Margaret and Charles Athey
John and Teresa Ayres
Joshua D. Bell
David and Paula Bonner
Jim and Laura Byrnes
Bill and Anita Cast
Edward S. Clark
Jean and Doris Creek
Susan J. Devito

Harvey and Phyllis Feigenbaum
Jack M. Gill, Ph.D. and Linda Challis Gill
Robert and Martha Gutmann
Dr.* and Mrs. Frank N. Hrisomalos
Peter P. Jacobi
Jennifer A. Johnson
Susan M. Klein and Robert Agranoff
Dr. Monika H. and Dr. Peter H. Kroener
Darby Earles McCarty
Joe and Sandy Morrow
Cyndi Dewees Nelson and Dale Nelson

Delano L. Newkirk and Luzetta A. Newkirk
Ora H. Pescovitz
Phyllis C. Schwitzer
Curtis R. and Judy Chapline Simic
Fred* and Roberta Fox Somach
L. Robert Stohler and Sylvia A. Stohler
Thomas and Linda Taylor
J. William Whitaker, M.D. and
Joan M. Whitaker
Mark Wiedenmayer
John and Linda Zimmermann

Dean Wilfred C. Bain Circle

Patrons

\$500 - \$999

James and Ruth Allen
Peggy K. Bachman
Mark K. Bear
Malcolm H. Brown
Cathleen Cameron
Carter and Allyson Cast
John W. Clower
Gayle T. Cook
Dr. and Mrs. Fred W. Dahling
Carolyn and Charles Deodene
James V. and Jacqueline C. Faris
Robert R. Greig
Darlene and Rajih Haddawi
Robert and Ann Harman

Lenore S. Hatfield
Elizabeth Hewitt and Richard Small
Jeffrey and Lesa Huber
Sarah J. Hughes and A. James Barnes
Linda and Kenneth Kaczmarek
Vicki and Thomas King
Howard and Linda Klug
George and Cathy Korinek
Herb and Judy Miller
Carol and Wade Peacock
Gina Reel and Charles Thompson*
John and Lislott Richardson
Murray and Sue Robinson
L. David Sabbagh

Randy Schekman and Nancy Walls
Marilyn F. Schultz
Scott C. and Kay Schurz
Anthony and Jan Shippis
Janet S. Smith
Blount and Anna Stewart
Ellen Strommen
Harue and Tsuyoshi Tsutsumi
Henry and Celia Upper
Martha F. Wäiles
Mary H. Wennerstrom
Patricia L. Williams
Galen Wood

Sustainers

\$300 - \$499

Gary and Kathy Z. Anderson
Olimpia F. Barbera
Shirley Bell
Elizabeth and Gerald Calkins
James and Carol Campbell
Bart and Cinda S. Culver
Lee and Eleanore Dodge
Danny and Jeanette Duncan
David and Arlene Effron
Stephen A. Ehrlich
Donald and Sandra Freund
Michael and Patricia Gleeson
Ralph E. Hamon, Jr.
Andrew J. Hanson and Patricia L. Foster

R. Victor Harnack
Steven L. Hendricks
Ernest N. Hite and Joan E. Pauls
Diane S. Humphrey
Anna L. Jerger
Margaret and Donald Jones
Martin and Linda Kaplan
Thomas and Mary Kendrick
Peter V. Koenig and Mary E. Jamison
Yvonne Y. Lai and Kenneth P. Mackie
Aylet E. Lindenstraus and Michael J. Larsen
Bill and Ellie Mallory
Rosemary G. Messick
Dawn E. Morley

Frank and Nancy Nagler
Lois S. Pless
Stephen Pock and David Blumberg
Bill and Dorothy Richards
Kathleen C. Ruesink
Juliet Sablosky
Mark and Anne Sauter
Judith L. Schroeder and Edward Mongoven
John and Lorna Seward
Lewis H. Strouse
Elizabeth R. Vance-Rudolph
Kenneth and Marcia VanderLinden
Jerry and Joan Wright
Steve and Judy Young

Donors

\$100 - \$299

Eleanor and Michael Aisenberg
David and Melanie Alpers
Debra K. Athey
Carolyn A. Bailey
Mark J. Baker
David and Ingrid Beery
Frances J. Bell
Elizabeth and Bruce Bennett
Norma Beversdorf-Rezits and Joe Rezits
Charles F. Bonser
Ellen R. Boruff
Jaclyn and Bill Brizzard
Jack and Pam Boggs Burks
Derek and Marilyn Burleson
Barbara J. Byrum
Beatrice H. Cahn
Barbara J. Carlson
Carroll Cecil and Virginia Long-Cecil
Karen-Cherie Cogane and Stephen Orel
Donald and Shirley Colglazier
Jean and Don* Cook
Mary Alice Cox and Jim Koch
David Crandall and Saul Blanco
J. Robert Cutter
John and Carol Dare
Jeffrey L. Davidson and Pamela Jones
Davidson
Samuel J. Davis
Wendell R. Davis
Julia DeHon
Carol J. Dilks
Frank and Ruth DiSilvestro

Deborah Divan
Amy Dorfman and Donald Capparella
Beth and John Drewes
David A. Drinkwater
Sarah J. Dunn and J. Michael Dunn
John R. Edgeworth
Anne C. Eisfeller
Joe and Gloria Emerson
Elaine and Philip Emmi
James and Joan Ferguson
Richard and Susan Ferguson
Robert and Geraldine Ferguson
Bruce and Betty Fowler
Sharon and Norman Funk
Paul and Ellen Gignilliat
Elizabeth and Robert Glassey
Constance Cook Glen and James Glen
Vincent M. Golik, III
Sylvia and Harold Gortner
John J. Greenman
Jerry and Linda Gregory
Suzanne and Richard Gunther
Samuel and Phyllis Guskin
Hendrik and Bieneke Haitjema
Kenneth and Judy Hamilton
Stanley and Hilary Hamilton
Ken and Janet Harker
Pierrette Harris
Robert and Emily Harrison
James Richard Hasler
Adrien B. Himm
John D. Hobson

Rona Hokanson
Margaret and George Holden
Richard and Lois Holl
Norman and Judy Holy
Joseph and Suzanne Hopkins
Takeo and Tamaki Hoshi
Linda S. Hunt and Timothy M. Morrison
Roger and Carol Isaacs
Warren W. Jaworski
Margaret Jenny and Jack Fearnside
Lora D. Johnson
Burton and Eleanor Jones
Marilyn J. Keiser
Marilyn J. Kelsey
Jack and Julie King
Rose Krakovitz
Kate M. Kroll
Shirley Krutilla
Eric Lai and Grace Lok
Arthur W. Larson
Joan B. Lauer
Jhani Laupus and Mike Sample
Julia and John* Lawson
Diana Dehart Lehner
Ann W. Lemke
Leslie and Kathleen Lenkowsky
Lesley and Mark Levin
Harlan L. Lewis and Doris F. Wittenburg
Nancy Liley
Peter G. Lorenzen
Pamela Williamson Lowe and David Lowe
P. A. Mack, Jr.

Jeanne and James Madison
Samuel Mallor
Mayer and Ellen Mandelbaum
Dr. Rochelle G. Mann
David and Catherine Martin
Nancy G. Martin
Andrea Marthias
Jerry A. and Jane P. McIntosh
Julia E. Merkt
Susan E. Middlesteadt
Geraldine and John Miller
Ronald and Joyce Miller
Laura J. Mills*
G. Scott Mitchell and Rosalind Burwell
Steve and Sandra Schultz Moberly
Michael H. Molenda, Ph.D. and Janet C.
Stavropoulos, Ph.D., J.D.
Gerald L. and Anne Klock Moss
Pat and Jack Mulholland
Patricia Murphy Pizzo
Heather, Daniel, and Nicolas Narducci
Lenny and Lou Newman
Evelyn M. Niemeyer
David and Barbara Nordloh
Marilyn F. Norris
Ted and Soili Ochsnor
Edward and Patricia O'Day
Wesley and Patricia Oglesby
Harold and Denise Ogren
David and Diane O'Hagan

Joan C. Olcott
Richard and Jill Olshavsky
Margaret and J. Patrick* Page
Linda and David Pennebaker
Dorothy L. Peterson
Carol Pierce and Carl Rexroad*
Fred A. Place
Raymond A. Polstra
Gary and Christine Potter
Frona and Ron Powell
Robert and Patricia Powell
Eileen K. Prose
Jill Robinson and Russell Percifield
Allan and Barbara Ross
Edward and Janet Ryan
James and Helen Sauer
Richard K. Schall
Norma E. Schenck
Richard and Barbara Schilling
Lisa Scrivani-Tidd and Roderick Tidd
J. Robert Shine
Rebecca and John Shockley
Janet A. Shupe
Michael A. Simkowitz
David K. Smith and Marie Libal-Smith
Laird and Nancy Smith
Linda K. Smith
John L. Snyder
Stephen T. Sparks
David and Alice Starkey

Gene and Ellen Stern
Linda Strommen
Bill and Gayle Stuebe
Elzbieta Szymt and John Karaagac
Ellen C. Tamura
Yasuoki Tanaka
Jeffrey R. Tanski
Saundra B. Taylor
Charlotte H. Templin
Patricia L. Thoms
Linda J. Tucker
LCDR Jeffrey Stewart Tunis
Sharon P. Wagner
George Walker and Carolyn Lipson-Walker
Donovan Walling and Samuel Troxal
Mary A. Watt and William C. Strieder
Rebecca and Wayne Weaver
Robert and Patricia Webb
Fran and Gene Weinberg
Kay and Ewing Werlein
Roger and Barbara Wesby
Philip and Shandon Whistler
G. Cleveland and Frances* Wilhoit
Jim and Ruth Witten
Donna and Richard Wolf
Sara and Thomas Wood
Margaret and John Woodcock
Timothy and Sara Zwickl

**deceased*

Corporations and Foundations

Avery & Greig, LLP
Benevity Social Ventures, Inc
Bloomington Thrift Shop

Culver Family Foundation
Five Star Quality Care, Inc.
Joshua Bell, Inc.

Meadowood Retirement Community
United Technologies Corporation

Companies Providing Matching Gifts

Eli Lilly & Company
Fidelity Charitable Gift Fund

IBM Corporate Foundation
Northwestern Mutual Foundation

Vanguard Charitable Endowment Program

Planned Gifts

We are grateful to those individuals who have expressed their interest in ensuring scholarship support for tomorrow's students today by making a planned gift through a testamentary gift in their estate planning by a will or trust, charitable gift annuity, or retirement plan. We are pleased to acknowledge those individuals who have provided gift documentation.

David* and Ruth Albricht
Peggy K. Bachman
Mark and Ann* Bear

Marvin Carmack*
Cyndi Dewees Nelson and Dale Nelson
Jan and Charles* Peters

Curtis R. and Judy Chapline Simic
LCDR Jeffrey Stewart Tunis
Patricia L. Williams

Memorials and Tributes

Each year, we receive gifts in honor or in memory of individuals whose leadership and good works have enriched the lives of so many. We are pleased to recognize those special individuals and the donors whose gifts they have inspired.

Lois C. Adams Miller, in memory of Professor Margaret White Carol and Roger Allman, in honor of Glen and Lee Allman Joseph and Sharon Amlung, in honor of Timothy D. Amlung Janet and William Anderson, in honor of Ellen Strommen and Linda Strommen

Charles and Margaret Athey, in memory of Professor Walter Robert Debra K. Athey, in memory of Susie J. Dewey Susan H. Backer, in memory of Stephen A. Backer Chlois and Paul Barkman, in memory of Karen A. Bailey Allan R. Bartel and Lorie Selander Bartel, in memory of Karen A. Bailey Beth and Frederick Behning, Jr., in memory of Karen A. Bailey, in memory of Frederick C. Ebbs, and in memory of Ruth L. Ebbs Frances J. Bell, in memory of G. S. Bell Shirley Bell, in memory of Alan P. Bell Norma B. Beversdorf-Rezits and Joseph M. Rezits, D.M.A., in honor of Olimpia F. Barbera

Christopher and Deborah Botos, in honor of the Rose Bowl Tribute Debra and Louis Britton, in memory of Karen A. Bailey V. Barbara Bush, in memory of Hezekiah and Dorothy Bush Michael A. Camp, in memory of Robin C. Hunter Samuel and Sue Carmichael, in memory of Karen A. Bailey Charles and Eleanor Carter on behalf of the Tuesday Morning Tap Class: Denise, Ellie, Marilyn, Gayle, Nancy, Jeannie, and Alix, in memory of Karen A. Bailey

Steve and Kenya Cobb, in memory of Karen A. Bailey Marion and William Crawford, Jr., in honor of Buck Crawford, and in honor of Betty Crawford

David A. DePeters and Elizabeth Hainen DePeters, in honor of Susann H. McDonald

Jason Derrick, in honor of Lee Pryor Uhlhorn Susan J. Devito, in memory of Dominic Devito Ruth and Frank R. DiSilvestro, in memory of Margaret Strong David A. Drinkwater, in memory of Oswald G. Ragatz, D.M.A. Hannah L. Dubina, in memory of Marjorie J. Dubina Stephany A. Dunfee, in memory of Jack C. Dunfee, Jr. Patricia Eckstein, in memory of Richard O. Bremigan Frank and Vickie Edmondson, in memory of Margaret Edmondson and in memory of Frank K. Edmondson, Ph.D.

Stephen A. Ehrlich, in memory of Harold Ehrlich and in memory of Goldye Ehrlich Eichhorn and Eichhorn LLP, in memory of Karen A. Bailey Phyllis B. Ferrell, in memory of Karen A. Bailey

Myra and Stephen Foster, in memory of Mildred Butz Manis Anne T. Fraker, in memory of her husband, Rupert A. Wentworth Donald and Sandra R. Freund, in memory of David N. Baker, in honor of Lida M. Baker, and in memory of Kenda M. Webb Agnes H. Friel, in memory of Karen A. Bailey Scott and Susan Gorham, in honor of Charles J. Gorham Lisa B. Greenfield and Frank Nothaft, in honor of Janette S. Fishell, D.M.

Janet and Walter Gross, Jr., in memory of Karen A. Bailey Joe and Kathryn Gunther, in memory of Walter J. Blanton Darlene and Rajih Haddawi, in honor of Shirley Bell, in honor of Joshua D. Bell, and in memory of Myfanwy Richards Jo Ellen and Steve Ham, in memory of David N. Baker Melody Harrington, in memory of Kenneth C. Ford Kimberly and Thomas Hauser, in memory of Karen A. Bailey Anne and J.B. Hayes, Elizabeth Hamm & Family, and Eric Hayes & Family, in memory of Karen A. Bailey Diane and Stephen Hiatt, in memory of Karen A. Bailey Jeffrey and Lesa Huber, in memory of Carol M. Lorenzen Michael Hurrubise and Ann E. Murray, in honor of Ellen C. Gignilliat, in honor of Craig C. Grannon, and in honor of Linda D. Grannon Michele and Robert Johns, in honor of the Alumni Band Wedding for Sarah Calderon on September 3, 2016

Mark and Susan Johnson, in memory of Karen A. Bailey Hilda Jones, in honor of Holly Wood Patricia C. Jones, in memory of Richard E. Jones James and Jenice Keeler, in memory of Karen A. Bailey

Marilyn J. Keiser, in honor of Brent M. Gault Elaine and Ken Keltner, in memory of Karen A. Bailey Joseph C. Kraus, in memory of George C. Kraus Cynthia and James Lambrecht, in honor of Ray and Molly Cramer Amy and Paul Lampi, in memory of Richard Allen Chisenhall Dennis and Judith Leatherman, in memory of Phyllis Leatherman, in memory of Dale Leatherman, and in honor of Michael L. Schwartzkopf

Stephen B. Lewis and Kathryn L. Ruff, in memory of Karen A. Bailey Craig and Kara Lidell, in honor of Andreas Poulimenos Carolyn M. Lipson-Walker, Ph.D. and George L. Walker, in memory of Elizabeth M. Sabga Samuel Mallor, in memory of Dorothy Mallor Barbara Massie, in memory of Harold L. Fenimore George and Janet McDonald, in honor of Susann H. McDonald David E. McNeel, in honor of David H. Jacobs Steven A. McNeil, in honor of Ray E. Cramer

Douglas M. Morgan, in honor of Matthew A. Johnson Jim and Jackie Morris, in honor of P. E. MacAllister, in honor of Sylvia A. McNair, and in honor of Timothy R. Noble Lawrence Myers, Jr., in memory of Betty J. Myers Loretta Nelson, in honor of Donald Trump Beatrice and Melvin Nevel, in memory of Irving L. Sablosky Never Stop Moving, LLC on behalf of the Luigi Jazz Dance Class, in memory of Karen A. Bailey

Marilyn F. Norris, in memory of Violette Verdy Margaret A. Page, in memory of J. Patrick Page Eleanor and James Pauloski, in memory of Karen A. Bailey Ora H. Pescovitz, M.D., in honor of Sylvia A. McNair Wayne H. Peterson, in honor of Marilyn J. Keiser Kathleen and Richard Phillips, Jr., in memory of Karen A. Bailey Gerry and Karen Porter, in memory of Karen A. Bailey James H. Pratt, D.B.A. and Kathryn A. Pratt, in memory of Karen A. Bailey

Eileen Prose, in memory of Susie J. Dewey R. Alan Quick and Brenda, in honor of Professor André Watts, and in honor of Joan C. Brand Donald and Jean Rhoads, in honor of Peter P. Jacobi and in honor of Charles H. Webb, Jr., D.M.

Marcia and Ronald Rice, in memory of Karen A. Bailey Fran and Richard Rosman, in memory of Ella Fitzgerald Fran and Richard Rosman, in memory of John Hasse and Sonya Melescu's marriage Juliet Sablosky, in memory of Irving L. Sablosky Maria K. Schmidt, Ph.D. and Paul B. Stephenson, in memory of David N. Baker

Mary E. Scroggs, in memory of R. Norwood Scroggs Gerri and Mark Shaffer, in memory of Karen A. Bailey Belinda D. Shaw, in memory of Margaret Strong David A. Sheldon, Ph.D., in memory of Barbara W. Sheldon Beverly and Stuart Skelley, in memory of Walter J. Blanton Angelica and Fred Smith, in memory of Margaret Strong Lee Ann Smith, in honor of David H. Jacobs, and in honor of Gwyn and Barbara Richards

Cynthia and Kenneth Stella, in memory of Karen A. Bailey Kevin and Leigh Stella, in memory of Karen A. Bailey Melinda and Tom Straley, in honor of Benjamin P. Straley Beverly O. Stratman, in memory of Violette Verdy Ellen Strommen, in memory of Laura J. Mills, and in honor of Louise and Leonard J. Newman Linda Strommen, in honor of Ellen Strommen Lewis H. Strouse, D.A., in memory of Lewis K. and Cora H. Strouse Nancy A. Tardy, in memory of Karen A. Bailey Patricia L. Thoms, in memory of Susie J. Dewey April and Dennis Tini, in memory of David N. Baker and in honor of Lida M. Baker

Tamara B. Trittschul, in memory of Karen A. Bailey Ruby Wampler, in memory of David N. Baker Renee Watts, in memory of Walter J. Blanton

Catherine and Larry Waynick, in honor of Marilyn J. Keiser
Susan and W. Michael Wells, in memory of Karen A. Bailey
Mary H. Wennerstrom, in honor of Janette S. Fishell, D.M.
Mark Wiedenmayer, in honor of Lida M. Baker and in honor of
Louise and Leonard J. Newman
Chad and Sarah Wood, in honor of Holly Wood

Galen Wood, in honor of David H. Jacobs
Donna Worth, in honor of Dana T. Marsh
Jamie and Rick Yemm, in memory of Karen A. Bailey
Judith and Steven Young, in honor of Richard L. Saucedo

*deceased

Endowments and Scholarships

The IU Jacobs School of Music gratefully acknowledges those individuals, corporations, and foundations who provide support through endowments and scholarships. The generosity and goodwill of those listed below puts a Jacobs School of Music education within the reach of many. To learn more about investing in our talented students, please contact Melissa Dickson, executive director of external affairs, at dickson9@indiana.edu or 812-855-4656.

Jacobs School of Music

William Adam Trumpet Scholarship
Valerie Adams Memorial Scholarship
Jamey Aebersold Jazz Combo Fund
Jamey and Sara Aebersold Jazz Fellowship
Richard L. and Ann T. Alden Scholarship
Gary J. and Kathy Z. Anderson Scholarship in Music Excellence
John T. and Adelia R. Anderson Music Scholarship
Violette Verdy and Kathy Ziliak Anderson Chair in Ballet
Willi Apel Early Music Scholarship Fund
Aronoff Percussion Scholarship
Martha and Fred Arto Music Scholarship
Aungst Scholarship
Stephen A. Backer Memorial Scholarship
Dr. Wilfred C. Bain Music Alumni Association Scholarship
Wilfred C. Bain Opera Scholarship Endowment
David N. Baker Jazz Scholarship
David N. Baker Visiting Artist Series
David Baker, Jr. Jazz Scholarship
Ballet Department Fund
Artur Balsam Chamber Music Project
Band Centennial Fund
Anthony and Olimpia Barbera Latin American Music Scholarship
Olimpia Barbera Recording Fund for the Latin American Music Center
Louise Bass and James F. Mellichamp Organ Scholarship
Earl O. Bates Memorial Scholarship
Eric D. Batterman Memorial Scholarship
Joseph Battista Memorial Fund
William Baus Historical Performance Institute Fund for Early Music
"Because You Want To Be Here" Scholarship
Achasa Beechler Music Scholarship Fund
William Bell Memorial Fund
Colleen Benninghoff Music Scholarship
The Michael E. Bent Scholarship
Leonard Bernstein Scholarship
John E. Best Scholarship
Thomas Beversdorf Memorial Scholarship
Neil A. Bjurstrom Horn Scholarship
The Harriett Block Operatic Scholarship
Mary R. Book Music Scholarship Fund
Boonshoff Family Music Scholarship
Ruth Boshkoff Scholarship
Fred Wilkins and Richard W. Bosse Flute Scholarship
Julia Beth Brabson Memorial Fellowship
Julia Brabson Scholarship
Mary E. and Richard H. Bradford Fellowship
Mary E. and Richard H. Bradford Opera Informance Support Fund
Brass Instrument Scholarship
W. Michael Brittenback and William Meezan Organ Scholarship
Frances A. Brockman Scholarship
A. Peter and Carol V. Brown Research Travel Fund
Kenneth V. & Audrey N. Brown Memorial Scholarship
Alonzo and Mary Louise Brummett Scholarship in Music
Sylvia Feibelman Budd and Clarence Budd Scholarship
Marjorie J. Buell Music Scholarship

Marjorie J. Buell Music Scholarship in Excellence
Pamela Buell Music Scholarship
Vivian N. Humphreys Bundy Memorial Scholarship Fund
Peter Burkholder and Doug McKinney Musicology Fund
Pam and Jack Burks Professorship
Elizabeth Burnham Music Instrument Maintenance Fund
Dorothy Knowles Bush and Russell Jennings Bush Piano Scholarship
The Camerata Scholarship
John and June Canfield Bloomington Pops Scholarship
Joan and Marvin Carmack Scholarship
Robert L. Carpenter Fund
Charles Diven Campbell Piano Scholarship
Susan Cartland-Bode Performance Excellence Scholarship
Susan Cartland-Bode Scholarship
Walter Cassel Memorial Scholarship
Austin B. Caswell Award
Center for the History of Music Theory and Literature Endowment Fund
Alan Chepregi Memorial Scholarship
Choral Conducting Department Enhancement Fund
Lucy and Samuel Chu Piano Scholarship
Emma H. Claus Scholarship Fund
Dr. Sarah Clevenger Scholarship
Sarah Clevenger Opera Production Fund
Eileen Cline Music Fund
Ginny Fisher Cole Singing Hoosiers Scholarship
Composition Department Fund
Cook Band Building Fund
Patricia Sorenson Cox Memorial Scholarship
Don H. and Cynthia McCallister Crago Scholarship
Ray E. Cramer Graduate Scholarship
Ray Cramer Scholarship
Jean and Doris Creek Scholarship in Trumpet
Donna and Jean Creek Scholarship
Donna and Jean Creek Scholarship in Voice
Mavis McRae Crow Music Scholarship Fund
T.F. Culver and Emma A. Culver Scholarship Fund
Jeanette Davis Fund
Pete Delone Memorial Scholarship
Alfonso D'Emilia Scholarship Fund
Department of Musicology Fund
Department of Music Education Fund
Dr. D. Michael Donathan Scholarship
Gayl W. Doster Scholarship in Music
Rostislav Dubinsky Music Scholarship
Jack and Stephany Dunfee Musical Arts Center Fund
Jack and Stephany Dunfee Musical Arts Center Scholarship
Fred Ebbs Memorial Scholarship
Eby Foundation Singing Hoosiers Scholarship
The Jeanette MacDonald-Nelson Eddy Opera Scholarship Fund
Maestro David and Eleanor Arlene Efron Music Conducting Scholarship
David Eissler Memorial Scholarship Fund
Ruth L. Elias Scholarship Fund
Guillermo Espinosa Endowment Fund
Merle Evans Scholarship

Fairview Elementary School String Project
 Fairview Elementary School String Project II
 Philip Farkas Horn Scholarship
 Daniel Feldt Music Scholarship
 Eleanor Fell Scholarship
 Rose and Irving Fell Violin Scholarship
 The Michael J. Finton Scholarship
 Five Friends Master Class Series
 The Philip C. Ford Scholarship in Music
 Ford-Crawford Recital Hall Maintenance Fund
 Frederick A. Fox Composition Scholarship
 William and Marcia Fox Scholarship in Music
 Dr. Frederick and Mary Moffatt Freeburne Teaching Fellowship
 Janie Fricke Scholarship Fund for Aspiring Musicians
 The Friday Musicale Scholarship
 J.N. Garton Memorial Scholarship
 Glenn Gass Scholarship
 Bill and Mary Gasser Scholarship/Fellowship Endowment
 Lynn E. Gassoway-Reichle Chair in Piano
 Robert Gatewood Opera Fund
 Cary M. Gerber Scholarship Fund
 Marcella Schahfer Gercken Band Scholarship
 Richard C. Gigax Memorial Scholarship Fund
 Gigniliat Music Scholarship Fund
 Ellen Cash Gigniliat Fellowship
 Linda C. and Jack M. Gill Chair in Violin
 Linda Challis Gill and Jack M. Gill Music Scholarship
 Gladys Gingold Memorial Scholarship
 Josef Gingold Violin Scholarship Fund
 Charles Gorham Trumpet Scholarship
 St. Luke's UMC/Goulding and Wood Organ Scholarship
 Martin Eliot Grey Scholarship
 Montana L. Grinstead Fund
 Jonathan L. Gripe Fund
 Arthur and Ena Grist Scholarship Fund
 Murray Grodner Double Bass Scholarship
 Wayne Hackett Memorial Harp Scholarship Fund
 Jack I. & Dora B. Hamlin Endowed Chair in Piano
 Margaret H. Hamlin Scholarship
 Judith Hansen-Schwab Singing Hoosiers Scholarship
 Margaret Harshaw Scholarship
 Russell A. Havens Music Scholarship
 Bernhard Heiden Scholarship
 Jascha Heifetz Scholarship
 Eva Heinitz Cello Scholarship Fund
 William Gammon Henry, Jr. Scholarship
 Julius and Hanna Herford Fund for Visiting Scholars and
 Conductors in Choral Music
 Dorothy L. Herriman Scholarship Fund
 Daniel F. Hewins Music Scholarship
 Daniel F. Hewins Vocal Performance Scholarship
 Margaret E. Hillis Memorial Scholarship in Choral Conducting
 Mark H. Hindsley Award for Symphonic Band
 Mark H. Hindsley Endowed Fund for Symphonic Band
 Historical Performance Institute Fund
 Ernest Hoffzimmer Scholarship
 Leonard Hokanson Chamber Music Scholarship
 Georgia Wash Holbeck Fellowship
 David Holcenberg Singing Hoosiers Scholarship
 William T. Hopkins Scholarship
 William S. and Emma S. Horn Scholarship Fund
 Harry and Ruth Houdeshel Memorial Flute Scholarship
 Bruce Hubbard Memorial Scholarship
 Dwan Hublar Music Education Scholarship
 Lawrence P. Hurst Medal in Double Bass
 Thomas Pegg Hustad Jazz Collection Cataloging Fund
 Harriet M. Ivey Music Scholarship
 IU Children's Choir Fund
 International Harp Competition
 Barbara and David Jacobs Fellowship
 Barbara and David Jacobs Scholarship
 Barbara and David Jacobs School of Music Enhancement Fund
 David H. Jacobs Chair in Music
 David Henry Jacobs Fund
 David Henry Jacobs International Overseas Study Scholarship
 David Henry Jacobs Music Scholarship
 Jacobs Bicentennial Scholars and Fellows in Honor of Charles H. Webb

Jacobs Endowment in Music
 Jacobs School of Music Annual Scholarships
 Jacobs School of Music International Overseas Study Scholarship
 Jacobs School of Music Office of Entrepreneurship & Career
 Development Fund
 Eva Janzer Memorial Fund
 Jazz Double Bass Studio Fund
 Wilma Jensen Organ Scholarship
 Dick and Louise Johnson Foundation Music Scholarship
 Ted Jones and Marcia Busch-Jones Musical Arts Center Fund
 Ted Jones Musical Arts Center Executive Director of Production Fund
 Georgina Joshi Composition Commission Award
 Georgina Joshi Fellowship
 Georgina Joshi Fund
 Georgina Joshi Handelian Performance Fund
 Georgina Joshi International Fellowship
 Georgina Joshi Recording Arts Studio Fund
 Walter and Freda Kaufmann Prize in Musicology Fund
 Mack H. Kay Scholarship for Excellence in Jazz Composition Fund
 Marilyn Keiser Organ Scholarship
 Thomas R. and Alice P. Killey Scholarship in Voice
 Martin Luther King, Jr. Scholarship
 Betsy Kiser Scholarship
 Klinefelter Scholarship Fund
 Marilyn Bone Kloss Music Fellowship
 Howard and Linda Klug Clarinet Scholarship
 Eugene J. and Eleanor J. Knapik Fund
 Lucie M. Kohlmeier Music Scholarship in Voice
 Korea Scholarship and Faculty Fund in Music
 Tibor Kozma Instrumental Conducting Scholarship
 Robert Kraus Memorial Scholarship
 Krefeldt-Stewart Scholarship in Voice and Ballet
 Peter and Monika Kroener Dean's International Fellowship in Music
 George and Elizabeth Krueger Scholarship
 Herbert O. Kuebler Music Fellowship
 Michael Kuttner Musical Education Fund
 Robert LaMarchina Music Scholarship
 Latin American Music Center Fund
 James and Kathie Lazerwitz Visiting Artists Fund
 Sara and Robert LeBien Jacobs School of Music Scholarship
 Sara J. and Robert F. Lebien Scholarship
 Lewis Family Scholarship in Music
 Martha Lipton Scholarship
 Brenda Bailey and G. William Little, Jr. Scholarship
 Brenda Bailey and G. William Little, Jr. Voice Scholarship
 Jay Lovins Memorial Scholarship Fund
 Ethel Louise Lyman Memorial Fund
 P.E. MacAllister Scholarship in Voice
 John Mack Memorial Scholarship in Oboe
 Virginia MacWatters Abee Scholarship
 Patrice Madura Scholarship
 Jeanette Calkins Marchant Friends of Music Scholarship
 Marching Hundred Fund
 Marching Hundred Hall Fund
 Marching Hundred Instrument Fund
 Wilda Gene Marcus Piano Scholarship
 Jay Mark Scholarship in Music
 Georgia Marriott Scholarship
 Arthur W. Mason Music Scholarship Fund
 Matula Family RedStepper Fund
 Mary Justine McClain Opera Theater Fund
 Susan Sukman McCray Scholarship
 Susann McDonald Fund
 Susann McDonald Harp Study Fund
 Katherine V. McFall Scholarship
 The William C. McGuire Scholarship
 Bernardo and Johanna Mendel Graduate Scholarship for the
 School of Music
 Menke/Webb/Sturgeon, Inc. Fund
 Donald B. and Sonna A. Merk Music Scholarship
 B. Winfred Merrill Scholarship Fund
 Lou and Sybil Mervis String Quartet Fund
 Arthur R. Metz Carillon Fund
 Arthur R. Metz Organ Department Fund
 Otto Miessner Memorial Music Scholarship Fund
 Nathan A. and Margaret Culver Miller Memorial Scholarship Fund
 Dorothy Hoff Mitchell Scholarship

Peter Steed Moench Scholarship
 Jack and Marilyn Moore Graduate Flute Fellowship
 Marcel Mule Scholarship Fund
 Music Dean's Dissertation Prize Endowment Fund
 Music Library Fund
 Music Theory Fund
 Nellie Woods Myers Scholarship
 Ben Nathanson Scholarship
 Nina Neal Scholarship Fund
 Robert Erland Neal Music Scholarship
 Delano and Luzetta Newkirk Musical Arts Center Fund
 Otto Nothhacksberger Endowed Chair
 Otto Nothhacksberger Memorial Fund
 Eugene O'Brien Bicentennial Executive Associate Deanship
 Robert O'Hearn Fund
 Robert R. O'Hearn Opera and Ballet Production Fund
 On Your Toes Fund
 Opera Illinois League Scholarship
 Opera Production Fund
 Bernard Opperman Memorial Fund
 Organ Department Fund
 Juan Orrego-Salas Scholarship
 The Richard & Eleanor Osborn Scholarship Endowment for Music
 Namita Pal Commemorative Award
 Jason Paras Memorial Fund
 Marie Alice and Gilbert Peart Scholarship
 James and Helen Mae Pellerite Music Library Fund
 James & Helen Pellerite Flute Scholarship
 Jackie Pemberton Memorial Scholarship Fund
 Doris Klausung Perry Scholarship
 Harry B. Peters Endowed Scholarship
 Harvey Phillips Memorial Scholarship
 Harvey Phillips Tuba-Euphonium Quartet Composition Contest
 Walter and Rosalee Pierce Scholarship in Organ
 ILdebrando Pizzetti Memorial Scholarship Fund
 Cole and Kate Porter Memorial Scholarship
 George E. Powell, III Scholarship
 Pre-College Ballet Scholarship
 The Presser Foundation Scholarship and the Presser Music Award
 Project Jumpstart Fund
 Garry Lee and Nancy Gray Puckett Scholarship
 Mary and Oswald G. Ragatz Organ Scholarship
 Stanley Ransom Scholarship in Voice
 Robert C. Rayfield Memorial Scholarship
 RedStepper Fund
 RedStepper Scholarship
 Charlotte Reeves Chamber Music Endowment Fund
 Albert L. and Lynn E. Reichle Scholarship in Music
 Albert L. Reichle Chair in Trumpet
 Dorothy Rey Scholarship
 The Sally W. Rhodes Scholarship
 Gwyn and Barbara Richards Family Scholarship
 Gwyn Richards Scholarship
 Agnes Davis Richardson Memorial Scholarship Fund
 John P. Richardson Jr. Violin Scholarship
 The Naomi Ritter Scholarship
 Walter and Dorothy Robert Scholarship Fund
 Louise Roth Scholarship
 Leonard & Maxine Ryan Memorial Fund
 Barbara Kinsey Sable Voice Scholarship
 Rosetta Samarotto Memorial Scholarship
 Roy and Mary Samuelson Scholarship
 Elizabeth Schaefer Memorial Scholarship
 Richard J. Schilling Collaborative Piano Scholarship in Honor of
 Charles H. Webb
 Lee Edward Schroeder Endowed Scholarship
 Scott Schurz Music Scholarship
 Michael L. Schwartzkopf Singing Hoosiers Fund
 Gyogy Sebok Scholarship in Piano
 Ruth Parr Septer Scholarship Fund
 John and Lorna Seward Organ Maintenance Fund
 Maidee H. and Jackson A. Seward Organ Fund
 Maurice F. Shadley Scholarship
 Dr. Karen Shaw Doctoral Piano Fellowship
 Odette Fautret Shepherd Endowed Scholarship or Teaching Assistantship
 Sandra Brown Sherman Scholarship
 W. Richard Shindle Musicology Fund
 Terry C. Shirk Memorial Scholarship Fund
 Shulz Memorial Fund
 Curtis R. Simic Dean's Discretionary Fund
 Singing Hoosiers Endowment
 Singing Hoosiers Travel Fund
 Jean Sinor Memorial Lecture Series
 Jerry E. Sirucek Memorial Scholarship
 Samuel and Martha Siurua Scholarship Fund
 Susan Slaughter Trumpet Scholarship
 John Winston Spanier Classical Piano Fellowship
 Janos Starker Cello Scholarship
 Dorothy Richard Starling Chair in Violin Studies
 Charlotte Steinwedel Scholarship
 Evelyn P. Stier Memorial Scholarship Fund
 Edward M. Stochowicz Memorial Scholarship
 Douglas and Margaret Strong Scholarship
 Mark Sudeith Collaborative Piano Scholarship
 Harry Sukman Memorial Scholarship Fund
 Robert D. Sullivan Music Scholarship
 Judy and Gregg Summerville Music Scholarship
 R. Michael Suttle Trumpet Entrepreneur Scholarship
 Elsie I. Sweeney Memorial Scholarship
 The Maxine Rinne Talbot Music Scholarship
 Donald L. Tavel Memorial Scholarship
 Elizabeth Schaefer Tenreiro Scholarship Fund
 Marcie Tichenor Scholarship
 Mary Coffman Tilton Harpsichord Fellowship
 Hans and Alice B. Tischler Endowment
 Giorgio Tozzi Scholarship
 Trombone Artistic Activity Fund
 Sarah Joan Tuccelli-Gilbert Memorial Fellowship in Voice
 Henry A. Upper Chair in Music
 Andy and Celicia Upper Scholarship
 Roe Van Boskirk Memorial Scholarship in Piano Fund
 Carl G. and Mazelle Van Buskirk Memorial Scholarship Fund
 Jon Vickers Film Scoring Award
 Vocal Jazz Ensemble Fund
 Robert J. Waller Sr. and Robert J. Waller Jr. Professorship of Jazz
 William J. and Betty J. Wampler Scholarship
 Dean Charles H. Webb Chair in Music
 Charles and Kenda Webb Music Excellence Fund
 Charles H. Webb Music Scholarship
 Anna Weber Endowment Fund
 Michael Weiss Fund
 Wennerstrom Music Theory Associate Instructor Fellowship
 Mary Wennerstrom Phillips and Leonard M. Phillips Endowment
 Wennerstrom-Phillips Music Library Directorship Endowment
 Wennerstrom-Phillips Piano Scholarship
 Allen R. & Nancy A. White Instrument Fund
 Allen R. & Nancy A. White Music Scholarship
 Lawrence R. & Vera I. White Music Scholarship
 Kenneth C. Whitener Fund for Ballet Excellence
 Beth Stoner Wiegand Endowed Clarinet Scholarship
 Fred Wilkins and Richard W. Bosse Flute Scholarship
 Camilla Williams Voice Scholarship
 Robert E. Williams Singing Hoosiers Scholarship
 Patricia and Robert Williams Scholarship in Piano
 Bill and Lenis Williamson Music Scholarship
 Madge Wilson Music Scholarship Fund
 Carol A. Winger Memorial Fellowship
 Marjorie Schlamp Winters Scholarship Fund
 Janet Corday Won Memorial Scholarship
 Woodwind and the Brasswind Scholarship Fund
 Mildred F. Yoder Scholarship
 Steve Zegree Vocal Jazz Scholarship
 Avedis Zildjian Percussion Scholarship
 Asher G. Zlotnik Scholarship
 Lennart A. von Zwegberg Cello Scholarship

The Society of the Friends of Music

Friends of Music David Albright Memorial Scholarship
Margaret K. Bachman Friends of Music Piano Scholarship
Friends of Music Robert M. Barker Scholarship in honor of
Patsy Fell-Barker
Friends of Music Patsy Fell-Barker Scholarship in honor of my family
Thomas J. Beddow & Joseph W. Nordloh Memorial Friends of Music
Scholarship
Alan P. Bell Memorial Friends of Music Scholarship
George A. Bilque, Jr. Friends of Music Scholarship
Helen and Leland Butler Friends of Music Scholarship
Eleanor Jewell Byrnes Friends of Music Piano Scholarship
Marvin Carmack Friends of Music Scholarship
Joan and Marvin Carmack Friends of Music Scholarship
Anita Hursh Cast Friends of Music Scholarship
Esther Ritz Collyer Piano Scholarship
Cristini Friends of Music Scholarship
The Patsy Earles Friends of Music Scholarship
Robert A. Edwards Friends of Music Scholarship
Marianne V. Felton Friends of Music Scholarship in Voice
Richard S. and Jeanne Hardy Forkner Friends of Music Scholarship
Joyce and Jim Grandorf Friends of Music Scholarship
Marjorie F. Gravit Friends of Music Scholarship
Marjorie F. Gravit Piano Scholarship
Haddawi and Schurz Friends of Music Guarantor Scholarship
Friends of Music Haddawi Scholarship

Lawrence and Celeste Hurst Friends of Music Scholarship
The Alice V. Jewell and David B. Mills Friends of Music Scholarship
Jeanette Calkins Marchant Friends of Music Scholarship
Perry J. Maull Friends of Music Travel Fund
The Karl and Vera O'Lessker Friends of Music Scholarship
Joanne E. Passet Ph.D. and Deborah S. Wehman Friends of Music
Scholarship
Mary Jane Reilly Friends of Music Scholarship
Dagmar K. Riley Friends of Music Scholarship
Samuel E. Ross Friends of Music Scholarship
Dr. Richard Schilling-Ruth Tourner Friend of Music Voice Scholarship
Scott C. and Kathryn Schurz Friends of Music Scholarship
Scott C. and Kathryn Schurz Friends of Music Scholarship II
The Scott C. and Kathryn Schurz Latin American Friends of Music
Scholarship
Mr. and Mrs. Jake Shainberg and Mr. and Mrs. David Newman
Friends of Music Scholarship
Society of the Friends of Music Fund
Society of the Friends of Music of Indiana University Scholarship
Ruth E. Thompson Friends of Music Scholarship
Kenda Webb Friends of Music Scholarship
Ulrich Weisstein Friends of Music Scholarship in Voice
Herman B Wells Memorial Friends of Music Scholarship
Patricia L. Williams Friends of Music Scholarship

Special thanks to

Jake Heggie and Gene Scheer for sharing their time and artistry with Jacobs School of Music students, faculty, and the Bloomington community as *It's a Wonderful Life* makes its collegiate premiere with the Indiana University Opera and Ballet Theater.

Mary Alice Cox, Patsy Fell-Barker, Henry Upper, and the entire Society of the Friends of Music Fall Gala committee for organizing a special evening of fundraising benefitting Jacobs School of Music student scholarships.

Kim Pressman for the purchase of a new microphone system for use by Jacobs School of Music students and faculty.

Carol and John Cornwell and the Cheerful Heart Mission for partnering with our music education students, sending them to Haiti and the Dominican Republic, to provide music education for the youth in those countries.

Rick and Susan Marvin for organizing a Jacobs School of Music David N. Baker tribute at L.A.'s Blue Whale Jazz Club.

Old National Wealth Management for being our 2017-18 ticket stock sponsor.

Gary and Kathy Anderson for hosting a special evening for our ballet faculty.

Mary Anne and Ed Fox for providing generous support for the Jacobs School of Music's communications efforts.

The Joshi Family for the purchase of a new Hamburg Steinway for the Georgina Joshi Recording Arts Studio.

IU Jacobs School of Music Ballet Theater Production Staff

General Manager and David H. Jacobs

Bicentennial Dean Dean Gwyn Richards

Ted Jones Executive Director of Production Timothy Stebbins

Executive Administrator of Instrumental

Ensembles Thomas Wieligman

Rehearsal Pianists Justin Barbour, Hanjin Sa

Irina Ter-Grigoryan

Athletic Training Supervisor Alyssa McPherson

Athletic Trainer Kelley Rock Wiese

Production Stage Manager Trevor Regars

Technical Director Robert Brown

Assistant Technical Director Jeffrey Porter

Director of Paint and Props Mark F. Smith

Scenic and Props Assistant Gwen Law

Lighting Supervisor Mitchell Ost

House Electrician Jacob Lish

Costume Shop Manager Dana Tzvetkov

Costume Shop Projects Manager Soraya Noorzad

Wardrobe Supervisor Sarah Akemon

Stage Carpenters Ken D’Eliso, Andrew Hastings

Director of Audio Engineering and Sound

Production Konrad Strauss

Audio Technician Fallon Stillman

Director of Music Information Technology

Services Philip Ponella

IUMusicLive! Streaming Technician Tony Tadey

Ticketing, Sales, and House Manager Benjamin Harris

Executive Director of External Affairs Melissa Dickson

Director of Communications Robin Lasek

Assistant Director of Communications Linda Cajigas

Programs and Calendar Editor Jonathan Shull

Communications Assistant Sarah Slover

Administrative Assistant Isabel Jin

Administrative Production Assistant Madison Carroll

Administrative Business Assistant Paulina Francisco

Graphic Designers Ashley Beyer, Michelle Moss

Laura Pence

Web Designers Patrick Eddy, Loren McCready

Stitchers Wendy Langdon, Sarah Travis

Noriko Zulkowski

Dressers Liz Culpepper, Theresa Kesser

Anna Kozlakiewicz, Catie Sneath

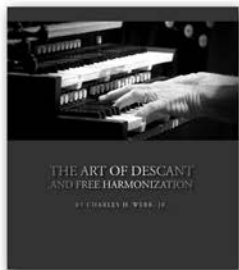
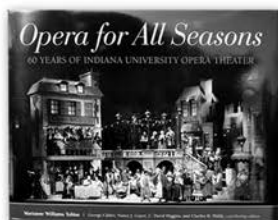
Nell Vandeveld, Amy Wooster

Costume Shop Assistant Claire Stebbins

INDIANA UNIVERSITY JACOBS SCHOOL OF MUSIC

Music MarketPlace

YOUR SOURCE for IU
Jacobs School of Music
recordings, apparel,
special gifts, and more!



ON SALE AT

iumusicmarketplace.com

or in the MAC lobby during opera and ballet productions.



OPERA & BALLET

THEATER 17/18 SEASON

Don Giovanni

Wolfgang Amadeus Mozart

SEP 15, 16, 22, 23 at 7:30pm

Fall Ballet

Balanchine, Bournonville,

Janes, & Robbins

SEP 29, 30 at 7:30pm

SEP 30 at 2pm

L'Étoile

Alexis Emmanuel Chabrier

OCT 13, 14, 20, 21 at 7:30pm

It's a Wonderful Life

Jake Heggie & Gene Scheer

NOV 10, 11, 16, 17 at 7:30pm

The Nutcracker

Peter Ilyich Tchaikovsky

NOV 30 and DEC 1, 2 at 7:30pm

DEC 2, 3 at 2pm

Ariadne auf Naxos

Richard Strauss

FEB 2, 3, 9, 10 at 7:30pm

Lucia di Lammermoor

Gaetano Donizetti

FEB 23, 24 and MAR 2, 3 at 7:30pm

Spring Ballet

Balanchine, Graham, Morris

MAR 23, 24 at 7:30pm

MAR 24 at 2pm

West Side Story

Leonard Bernstein

APR 6, 7, 13, 14 at 7:30pm

APR 8 at 2pm

TICKETS

Musical Arts Center Box Office
Monday-Friday, 11:30-5:30
812-855-7433

music.indiana.edu/operaballet



JACOBS SCHOOL OF MUSIC

Indiana University Bloomington